



ZANDA
ARCHITECTURAL HARDWARE

'MORE THAN JUST QUALITY - AN EXPERIENCE'



DOOR HARDWARE MADE EASY

INSIST ON QUALITY & STYLE... INSIST ON ZANDA

Zanda Architectural Hardware is pleased to present in this catalogue an unparalleled selection of genuine, superior, quality door furniture and accessories especially chosen to compliment the high standard of architecture found in today's homes and buildings.

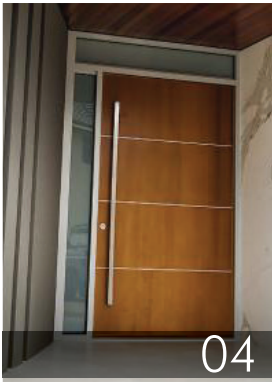


Zanda is a family owned Australian company with the experience and expertise essential for providing the efficient and courteous service that attracts and retains satisfied customers. Today the Zanda name has developed a strong sense of corporate identity and become renowned for its commitment to continuous improvement.

We invite you to peruse the range, make your choice and compare the difference.

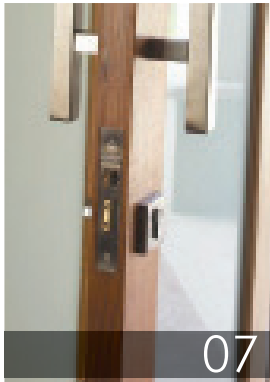


OUR RANGE



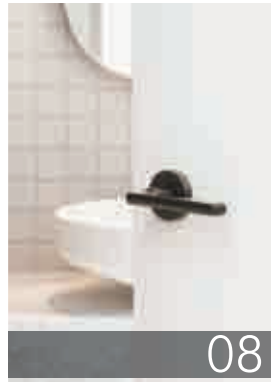
04

Entrance
Pull Handles



07

Pull Handle
Lock Kits



08

Door
Furniture



17

Sliding Door
Hardware



19

Door Stops &
Door Holders



20

Door Bolts &
Privacy Hardware



21

Hinges & Catches



22

Door Closers &
Pivots Hardware



23

Locks &
Cylinders



24

Cabinet
Handles

OUR FINISHES

Brushed Nickel (BN)



Stainless Steel (SS)



Brushed Nickel/ Chrome Plate
(BN/CP) Two-toned



Graphite Nickel (GN)



Satin Brass (SB)



Matt Black (BLK)



Chrome Plate (CP)



Satin Chrome (SC)



ENTRANCE PULL HANDLES

- Add style and flair to your entry point with Zanda Pull Handles
- All constructed from 316 Grade Stainless Steel
- Use with a lock kit (page 7) on your entry doors
- Use with door magnets or a catch for common entry internal doors (such as living, dining or theatre doors) (See page 21)

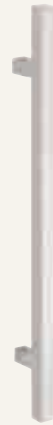
MARINE GRADE 316SS



Square Profile

Finish: SS

Code	O/A	W
7066	300mm	20x20mm
7055	600mm	25x25mm
7095	900mm	25x25mm
7096	1200mm	25x25mm
7097	1800mm	25x25mm



Streamline

Finish: SS

Code	Length	W
7240	600mm	30x15mm



Round Profile

Finish: SS

Code	Length	W
7063	300mm	19mm Ø
7025	450mm	32mm Ø
7026	600mm	32mm Ø
7092	900mm	32mm Ø
7093	1200mm	32mm Ø
7094	1800mm	32mm Ø



Round Profile Satin Brass

Finish: SB

Code	Length	W
7026	600mm	32mm Ø
7092	900mm	32mm Ø



Round Profile Graphite Nickel

Finish: GN

Code	Length	W
7026	600mm	32mm Ø



Arco

Finish: P/SS (two toned)

Code	Length	W
13501	610mm	32mm



Round Profile White

Finish: WHT

Code	Length	W
7026	600mm	32mm Ø
7092	900mm	32mm Ø
7093	1200mm	32mm Ø



Polo

Finish: SS

Code	O/A	W
7098	300mm	30x15mm
7099	450mm	40x20mm
7100	600mm	40x20mm
7101	900mm	40x20mm
7102	1800mm	40x20mm



Polo Matt Black

Finish: BLK

Code	O/A	W
7098	300mm	30x15mm
7099	450mm	40x20mm
7100	600mm	40x20mm
7101	900mm	40x20mm
7102	1800mm	40x20mm



Polo Graphite Nickel

Finish: GN

Code	Length	W
7098	300mm	30x15mm
7100	600mm	40x20mm
7101	900mm	40x20mm
7102	1800mm	40x20mm



Toorak

Finishes: SS, BLK, WHT

Code	Length	W
13505	625mm	25x25mm

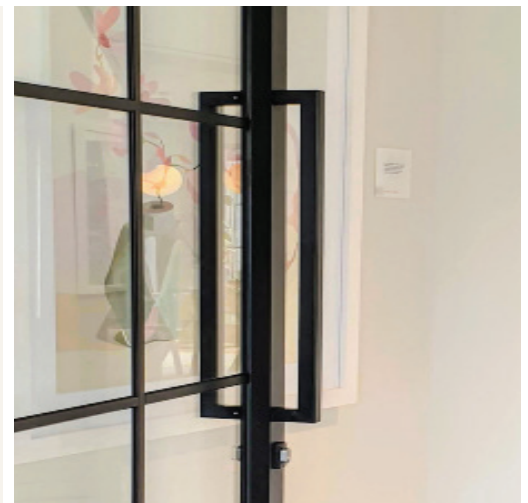
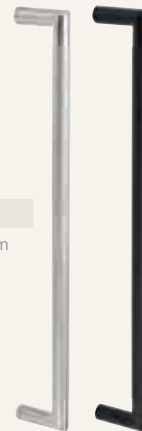


Wyatt

KNURLED

Finishes: SS, BLK

Code	Length	W
7385	470mm	20mm



Bedford

Finish: SS

Code	O/A	W
7380	200mm	12mm



Visca
Push/Pull
Plates

- Solid Brass
- 460x73mm Plate
- Finishes: BN, SB

Code	Product
9365	Pull Handle on plate
9366	Push plate



OFFSET ENTRANCE PULL HANDLES

- Great in narrow frame situations where your door has a glass infill
- Constructed from 316 Marine Grade Stainless Steel

MARINE
GRADE
316SS



Omega

Finish: SS

Code	Length	D
7300	600mm	32mm Ø
7301	900mm	32mm Ø
7302	1200mm	32mm Ø
7303	1800mm	32mm Ø



Round Offset

Finish: SS

Code	O/A	D
7028	600mm	32mm Ø
7143	1200mm	32mm Ø



Nitro Stainless Steel

Finish: SS

Code	O/A	W
7128	300mm	20x20mm
7129	450mm	25x25mm
7130	625mm	25x25mm
7131	900mm	25x25mm



Nitro Matt Black

Finish: BLK

Code	O/A	W
7128	300mm	20x20mm
7129	450mm	25x25mm
7130	625mm	25x25mm
7131	900mm	25x25mm



Nitro Graphite Nickel

Finish: GN

Code	O/A	W
7128	300mm	20x20mm
7130	625mm	25x25mm

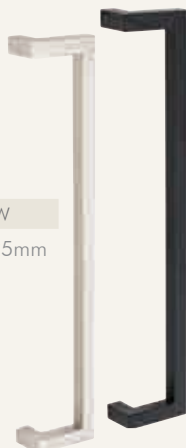


Nitro +

OFFSET 110MM

Finishes: SS, BLK

Code	O/A	W
7135	625mm	25x25mm



V23

Finish: SS

Code	O/A	W
7306	482mm	32mm Ø
7307	632mm	32mm Ø
7308	932mm	32mm Ø



PULL HANDLE LOCK KITS

Choose from three simple lock kits to compliment your Pull Handles



Roller Lock Kits

- Operated by push or pull from either side of the door (no lever handle required)
- Adjustable roller strength
- Kits include: 1140 Roller Lock, Escutcheons and Cylinder



1157.GN



1149.SS



1150.SB

Square Roller Lock Kits:

- 1157-1 Includes Key/Key Cylinder
- 1157-2 Includes Key/Turn Cylinder

Finishes: BLK, BN, GN & SC

Round Roller Lock Kits:

- 1149 Includes Key/Key Cylinder
- 1150 Includes Key/Turn Cylinder

Finishes: BLK, BN, GN, SB, SC & SS

Double Turn Lock Kits

- Compact thumb turn action retracts latch when door is unlocked
- Two stage bolt throw
- Latch retracts with cylinder
- Kits include: 1143 Mortice Lock, Turn Snibs, Escutcheons & Cylinder



Round

1183

46mm Ø roses
60mm Backset Lock

Finishes: BLK, BN, GN



Square

1184

51 x 51mm plates
60mm Backset Lock

Finishes: BLK, BN, GN

Premium Electronic Digital Deadbolt

1318.BN



- 2 Access Options: Password or Key
- Sleek and smooth backlit touchpad for durability and style
- Leading code function for extra security
- Up to 30 user codes can be set at anytime with the admin code set
- Optional auto lock function
- Low Battery Alarm
- Easy DIY installation – retrofits in most existing lock cut outs
- Door Thickness: 35mm – 51mm
- Keyway: C4, 5 Pin
- Power Supply: Four AA Batteries

VISCA

FEATURES

- All constructed from Solid Brass or Stainless Steel
- Lifetime warranty—your peace of mind
- 54mm architectural rose size
- Privacy handles include separate privacy kit (see page 20)

LIFETIME WARRANTY



Zurich



Finishes: BN, SB

KNURLED

- | | |
|--------|--------------------|
| 9346 | Passage Set |
| 9347 | Privacy Set |
| 9345.D | Dummy Set (Handed) |
| 9345.E | Entrance Set |



Zurich Graphite Nickel



Finish: GN

KNURLED

- | | |
|--------|--------------------|
| 9346 | Passage Set |
| 9347 | Privacy Set |
| 9345.D | Dummy Set (Handed) |
| 9345.E | Entrance Set |

Cambridge



Finishes: BN, SB

- | | |
|--------|--------------------|
| 9341 | Passage Set |
| 9342 | Privacy Set |
| 9340.D | Dummy Set (Handed) |
| 9340.E | Entrance Set |

Vienna



Finish: SB

- | | |
|--------|--------------------|
| 9351 | Passage Set |
| 9352 | Privacy Set |
| 9350.D | Dummy Set (Handed) |
| 9350.E | Entrance Set |

Wyatt



Finishes: SS, BLK

KNURLED

- | | |
|---------|--------------------|
| 11231 | Passage Set |
| 11232 | Privacy Set |
| 11233 | Dummy Set (Handed) |
| 11230.E | Entrance Set |

GARRISON

- Stainless Steel Construction
- Suitable for Commercial Applications
- Fire Rated to Australian Standards
- New Product brought over from JMA Acquisition

Arrow



Finish: SS

- | | |
|------|-------------|
| 8782 | Passage Set |
| 8730 | Privacy Set |
| 8713 | Dummy Set |

Meilani



Finishes: SS, BLK

- | | |
|------|-------------|
| 8982 | Passage Set |
| 8930 | Privacy Set |

Bellonia



Finish: SS

- | | |
|--------|-------------|
| 8082 | Passage Set |
| 8030 | Privacy Set |
| 8083.D | Dummy Set |

WINCHESTER

FEATURES

- Anti-germ capabilities through silver ions being released - reduces bacteria levels by 99% without your effort!
- Manufactured and designed in Italy
- Lifetime warranty —your assurance of quality
- 54mm architectural rose size
- Ergonomic design for user comfort
- Solid Brass construction
- Privacy handles include separate privacy kit



Copenhagen Rose



Finishes: RB, VP

- | | |
|--------|--------------------|
| 9411 | Passage Set |
| 9412 | Privacy Set |
| 9410.D | Dummy Set (Handed) |
| 9413 | Entrance Set |

Balmain Rose



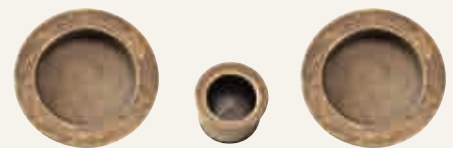
Finishes: RB, VP

- | | |
|--------|--------------------|
| 9421 | Passage Set |
| 9422 | Privacy Set |
| 9420.D | Dummy Set (Handed) |
| 9423 | Entrance Set |

Sliding Door Hardware

Finishes: RB, VP

9470 Passage Set



9471 Privacy Set



Rustic Brass (RB)



Vintage Pewter (VP)



Copenhagen Longplate



Finishes: RB, VP

- | | |
|--------|--------------------|
| 9416 | Passage Set |
| 9417 | Privacy Set |
| 9415.D | Dummy Set (Handed) |
| 9418 | Entrance Set |

Balmain Longplate



Finishes: RB, VP

- | | |
|--------|--------------------|
| 9426 | Passage Set |
| 9427 | Privacy Set |
| 9425.D | Dummy Set (Handed) |
| 9428 | Entrance Set |

ASTRON

FEATURES

- Lifetime warranty—your assurance of quality
- Modern, European styling with superb designs for user comfort
- Tie-through bolts & grub screws for secure fix—wont sag over time.
- 55mm architectural rose size (suits 25mm hole)
- Privacy function for rose furniture includes separate privacy turn kits (see page 20)
- Privacy function for longplates includes mortice & privacy cylinder



Luxe



Finish: BN

10011	Passage Set
10012	Integrated Privacy Set
10016	Separate Privacy Set
10013	Dummy Set (Handed)
10014	Entrance Set



Qube



Finishes: BN, SC

7059	Passage Set
7060	Privacy Set (Separate)
7058D	Dummy Set (Non-handed)
7085	Entrance Set

Oxford



Finish: BN/CP

10071	Passage Set
10072	Integrated Privacy Set
10076	Separate Privacy Set
10073	Dummy Set (Non-handed)
10074	Entrance Set



Oxford Graphite Nickel



Finish: GN

10071	Passage Set
10072	Integrated Privacy Set
10076	Separate Privacy Set
10073	Dummy Set (Non-handed)
10074	Entrance Set

Juno
Longplate



Finishes: BN, SC
Plate size 233x32x10mm

7046PA	Passage Set
7046PR	Privacy Set
7046D	Dummy Set (Handed)
7038	Entrance Set



Juno



Finishes: BN, SC

7036	Passage Set
7037	Privacy Set (Separate)
7019D	Dummy Set (Handed)
7081	Entrance Set

Matrix
Longplate



Finishes: BN, SC
Plate size 240x45x10mm

8131PA	Passage Set
8131PR	Privacy Set
8131D	Dummy Set (Handed)
8131E	Entrance Set



Matrix



Finishes: BN, SC

8128	Passage Set
8129PR	Privacy Set (Separate)
8130	Dummy Set (Handed)
8128E	Entrance Set

Apollo
Longplate



Finishes: BN, SC
Plate size 233x32x10mm

7045PA	Passage Set
7045PR	Privacy Set
7045D	Dummy Set (Handed)
7035	Entrance Set

Vulcan



Finish: BN

7150	Passage Set
7151	Privacy Set (Separate)
7149D	Dummy Set (Non-handed)
7153	Entrance Set

Quattro



Finishes: BN, SC

8099	Passage Set
8099PR	Privacy Set (Separate)
8114D	Dummy Set (Handed)
8100E	Entrance Set



FUTURA

FEATURES

- All styles are the same price, regardless of finish
- 15 year warranty—your assurance of quality
- Fitted to your door using Zanda rapidFIT installation system, saving install time and increasing overall strength. Suits just one 48mm cutout.
- 55mm architectural rose size (65mm adapters available to suit 54mm holes size)
- Available as integrated or separate privacy sets
- Fire Rated to Australian Standards

ANY
FINISH,
SAME
PRICE



Vector



Finishes: BN, SC

7107	Passage Set
7196	Integrated Privacy Set (BN)
7108	Separate Privacy Set
7106D	Dummy Set (Non-handed)
7110	Entrance Set

Vector Graphite Nickel



Finish: GN

7107	Passage Set
7196	Integrated Privacy Set
7108	Separate Privacy Set
7106D	Dummy Set (Non-handed)
7110	Entrance Set

Vector Matt Black



Finish: BLK

7107	Passage Set
7196	Integrated Privacy Set
7108	Separate Privacy Set
7106D	Dummy Set (Non-handed)
7110	Entrance Set

Apollo



Finishes: BN, SC

7033	Passage Set
7191	Integrated Privacy Set (BN)
7034	Separate Privacy Set
7015D	Dummy Set (Handed)
7080	Entrance Set

Apollo Graphite Nickel



Finish: GN

7033	Passage Set
7191	Integrated Privacy Set
7034	Separate Privacy Set
7015D	Dummy Set (Handed)
7080	Entrance Set

Apollo Matt Black



Finish: BLK

7033	Passage Set
7191	Integrated Privacy Set
7034	Separate Privacy Set
7015D	Dummy Set (Handed)
7080	Entrance Set

Adaptor Plates for Retro-fitting

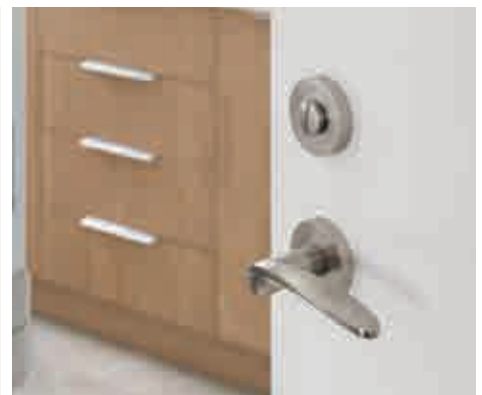
- Used when hole size in door is 55mm
- 65mmx10mm plate
- Sold in pairs
- Finishes: BN, BLK, GN, SB, WHT

10063	Suits Passage Set
10064	Suits Privacy Set



10063

Pictured with Epic Leverset



Epic Brushed Nickel



Finish: BN/CP

- 10021 Passage Set
- 10022 Integrated Privacy Set
- 10026 Separate Privacy Set
- 10023 Dummy Set (Non-handed)
- 10024 Entrance Set

Epic Graphite Nickel



Finish: GN

- 10021 Passage Set
- 10022 Integrated Privacy Set
- 10026 Separate Privacy Set
- 10023 Dummy Set (Non-handed)
- 10024 Entrance Set



Epic Satin Brass



Finish: SB

- 10021 Passage Set
- 10022 Integrated Privacy Set
- 10026 Separate Privacy Set
- 10023 Dummy Set (Non-handed)
- 10024 Entrance Set

Epic Matt Black



Finish: BLK

- 10021 Passage Set
- 10022 Integrated Privacy Set
- 10026 Separate Privacy Set
- 10023 Dummy Set (Non-handed)
- 10024 Entrance Set

Epic White



Finish: WHT

- 10021 Passage Set
- 10022 Integrated Privacy Set
- 10026 Separate Privacy Set
- 10023 Dummy Set (Non-handed)
- 10024 Entrance Set



Boston Brushed Nickel



Finish: BN

- 10081 Passage Set
- 10082 Integrated Privacy Set
- 10086 Separate Privacy Set
- 10083 Dummy Set (Non-handed)
- 10084 Entrance Set

Boston Graphite Nickel



Finish: GN

- 10081 Passage Set
- 10082 Integrated Privacy Set
- 10086 Separate Privacy Set
- 10083 Dummy Set (Non-handed)
- 10084 Entrance Set

Boston Matt Black



Finish: BLK

- 10081 Passage Set
- 10082 Integrated Privacy Set
- 10086 Separate Privacy Set
- 10083 Dummy Set (Non-handed)
- 10084 Entrance Set

Streamline Brushed Nickel



Finish: BN



- 7314 Passage Set
- 7090 Integrated Privacy Set
- 7315 Separate Privacy Set
- 7313D Dummy Set (Non-handed)
- 7316 Entrance Set

Streamline Satin Chrome



Finish: SC



- 7314 Passage Set
- 7090 Integrated Privacy Set
- 7315 Separate Privacy Set
- 7313D Dummy Set (Non-handed)
- 7316 Entrance Set

Streamline Graphite Nickel



Finish: GN



- 7314 Passage Set
- 7090 Integrated Privacy Set
- 7315 Separate Privacy Set
- 7313D Dummy Set (Non-handed)
- 7316 Entrance Set

Streamline Matt Black



Finish: BLK



- 7314 Passage Set
- 7090 Integrated Privacy Set
- 7315 Separate Privacy Set
- 7313D Dummy Set (Non-handed)
- 7316 Entrance Set

Streamline Satin Brass



Finish: SB



- 7314 Passage Set
- 7090 Integrated Privacy Set
- 7315 Separate Privacy Set
- 7313D Dummy Set (Non-handed)
- 7316 Entrance Set

Streamline White



Finish: WHT



- 7314 Passage Set
- 7090 Integrated Privacy Set
- 7315 Separate Privacy Set
- 7313D Dummy Set (Non-handed)
- 7316 Entrance Set

Duke Brushed Nickel NEW



Finish: BN

- 10091 Passage Set
- 10092 Integrated Privacy Set
- 10096 Separate Privacy Set
- 10093D Dummy Set (Handed)
- 10094 Entrance Set

Duke Graphite Nickel NEW



Finish: GN

- 10091 Passage Set
- 10092 Integrated Privacy Set
- 10096 Separate Privacy Set
- 10093D Dummy Set (Handed)
- 10094 Entrance Set

Duke Matt Black NEW



Finish: BLK

- 10091 Passage Set
- 10092 Integrated Privacy Set
- 10096 Separate Privacy Set
- 10093D Dummy Set (Handed)
- 10094 Entrance Set

Duke Satin Brass NEW



Finish: SB

- 10091 Passage Set
- 10092 Integrated Privacy Set
- 10096 Separate Privacy Set
- 10093D Dummy Set (Handed)
- 10094 Entrance Set

Futura Slimline Deadbolts

- 54mm rose size to suit Futura rose size
- Standard C4 keyway—supplied with 3 keys per lock

Finishes: BLK, BN, GN, SB, SC

- 9060 Single cylinder (key/turn)
- 9061 Double cylinder (key/key)



TRIAD

FEATURES

- 15 Year Warranty—your assurance of quality
- Designer Brushed Nickel finish
- Suits 55mm Ø hole size



Handle Style

PASSAGE SET

Includes leverset and latch



DUMMY SET

Fixing half leverset.



PRIVACY SET

Includes leverset with integrated privacy function and a latch.



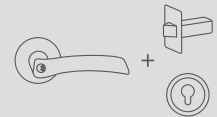
ENTRANCE SET

Includes key-in-lever door handle set and a latch.



COMBINATION SET

Includes entrance set and matching double cylinder deadbolt.



Sceptre Brushed Nickel



Finish: BN

11500	Passage Set
11501	Privacy Set (Pictured)
11502	Dummy Set
11503	Entrance Set
11520	Combination Set

Trident Brushed Nickel



Finish: BN

11508	Passage Set
11509	Privacy Set
11510	Dummy Set
11511	Entrance Set (Pictured)
11522	Combination Set

Trident Matt Black



Finish: BLK

11508	Passage Set (Pictured)
11509	Privacy Set
11510	Dummy Set
11511	Entrance Set
11522	Combination Set

Alto Brushed Nickel



Finish: BN

9134	Entrance Set
9135	Combination Set

Alto Matt Black



Finish: BLK

9134	Entrance Set
9135	Combination Set

Triad Slimline Deadbolts



11518	Round Single Cylinder (key/turn)	BN, BLK
11519	Round Double Cylinder (key/turn)	BN, BLK
11516	Square Single Cylinder (key/turn)	BN, GN
11517	Square Double Cylinder (key/turn)	BN

JURA

FEATURES

- 7 year warranty on mechanism
- All handles come in a Brushed Nickel finish.
- Jura is a specialised division of Zanda which provides a good range of products at exceptional pricing. The Jura range ticks all the boxes in the entry level market place.



Apex



Finishes: BN, CP

- | | |
|-------|------------------------|
| 9019 | Passage Set (Pictured) |
| 9020 | Privacy Set |
| 9018D | Dummy Set (Non-handed) |

Apex Elite



Finish: BN

- | | |
|-------|------------------------|
| 9037 | Passage Set (Pictured) |
| 9038 | Privacy Set |
| 9036D | Dummy Set (Non-handed) |

Helix



Finish: BN

- | | |
|-------|------------------------|
| 9031 | Passage Set |
| 9032 | Privacy Set (Pictured) |
| 9030D | Dummy Set (Handed) |

Austin

65mm Ø roses



Finishes: BN, BLK

- | | |
|--------|--------------|
| 9050 | Passage Set |
| 9051 | Privacy Set |
| 9052.D | Dummy Set |
| 9053 | Entrance Set |

Habitat Slimline Deadbolts

65mm Ø roses



Finishes: BN, BLK

- | | | |
|------|------------------------|---|
| 9063 | Round Single Cylinder | <ul style="list-style-type: none"> • Door thickness: 32mm - 50mm • Key and Snib Deadbolt • Fully concealed fixings • 6 pin PD cylinder - 5 pin loaded |
| 9064 | Square Single Cylinder | |

Baxter

NEW

65mm Ø roses



Finishes: BLK, BN, GN

- | | |
|-------|------------------------|
| 9140 | Passage Set |
| 9141 | Privacy Set |
| 9142D | Dummy Set (Non-handed) |

Aldo

65mm Ø roses



Finish: BN

- | | |
|-------|------------------------|
| 9136 | Passage Set (Pictured) |
| 9137 | Privacy Set |
| 9138D | Dummy Set (Non-handed) |



SLIDING DOOR HARDWARE

Duke Flush Pulls



5241
120 x 40mm
11mm depth
BLK, GN, SB, SS

5228
120 x 40mm
11mm depth
SS

Cavity Suite

- 54mm hole template
- Includes complimentary edge pull
- Stainless Steel Construction
- Finishes: SS, BLK, GN, SB

Round Style - 65mm

Square Style - 65x65mm



5326 Passage Kit
5327 Privacy Kit

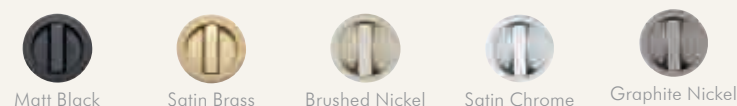
5330 Passage Kit
5331 Privacy Kit

Italian Cavity Sliding Range

8106 Privacy Kit

Includes: Turn, Escape, Edge Pull, Privacy Mortice

- Suits 34+ mm doors.
- Pressure fit flush pulls for ease of fitting
- Constructed from solid brass
- Countersunk flush pulls allow doors to be fully recessed into cavity
- Finishes: BLK, BN, GN, SB, SC

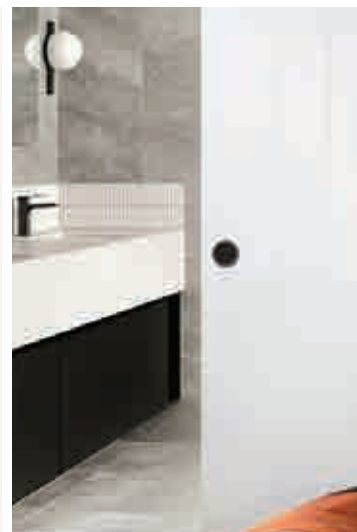


8107 Flush Pull Kit

2 x 55mm Flush Pulls & 8088 edge pull



Finishes: BLK, BN, GN, SB, SC



Edge Pulls

5333



- Square Style
- 29 x 29mm
- Finishes: SS, BLK, CP

8088

- Round Style - Solid Brass
- 29mm Ø
- Finishes, BLK, BN, GN, SB, SC



Flush Rings

Finish: SC
Solid Brass Construction



5177 40 x 33mm
5154 50 x 37mm

Square Style, Concealed Fix

5288

90 x 18mm
SS, GN, BLK, SB & WHT



Verve Flush Pull Range

- 316 Grade Stainless Steel Construction
- 37mm narrow profile to suit aluminium doors
- 10mm depth
- Concealed fixings—aesthetically appealing
- Chamfered edges for improved ergonomics

5303	150x37mm	BLK, SS
5304	200x37mm	BLK, GN, SB, SS
5305	250x37mm	BLK, SS
5306	300x37mm	BLK, GN, SB, SS, WH



Verve Flush Pull Kits

- All Kits include:
- 2 Verve Flush Pulls
 - 5288 Edge Pull

5319	150x37mm	SS, BLK
5320	200x37mm	SS, BLK, SB, GN
5321	250x37mm	SS, BLK
5322	300x37mm	SS, BLK, SB, GN



Verve Lock Kits - Standard

- All Kits include:
- 1290 Sliding Door Lock
 - 40mm Euro Cylinder
 - 2 Euro punched Flush Pulls
 - 5288 Edge Pull

1269	200x37mm	SS, BLK, SB, GN
1270	250x37mm	SS, BLK
1271	300x37mm	SS, BLK, SB, GN



More lock kit options available, visit www.zanda.com.au



DOOR STOPS

Floor Mounted



5256
38x38mm
BN,GN,SA,BLK,SB



5264
60x38mm
BN, SA

14009
base: 54x65mm
height: 49mm
BN, SC



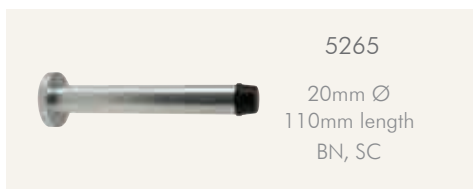
14008
44mm Ø
height: 25mm
BN, SC, BLK, WHT

14010
44mm Ø
height: 35mm
base: 13mm
BN, SC

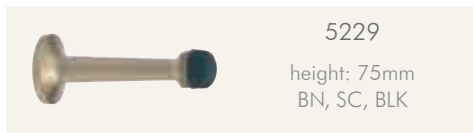
Skirting Mounted



5240
16mm Ø
85mm length
BN, BLK, SC, SB, GN



5265
20mm Ø
110mm length
BN, SC



5229
height: 75mm
BN, SC, BLK



5262
base: 19x19mm
height: 80mm
BN, BLK

Door Stop/Holder



5258
Engaged length 93mm
Finishes: BN, SC, BLK



5133
Engaged length 88mm
Finish: SC

Overhead Door Stops



5263
Left or Right Handing
Screws to door head jamb
157 x 46mm
Finish: SS

Magnetic Door Stops



10503
16mm Ø
316 Stainless Steel



10500
50mm base
75mm projection
BN, SC, BLK, GN, SB, WHT



10502
76mm projection
BN, SC

HOOKS

Hat & Coat Hooks



5252
Finishes: SC, BLK
50 mm length

5250
Finishes: SA & BN
Hat & Coat Hook
Rounded

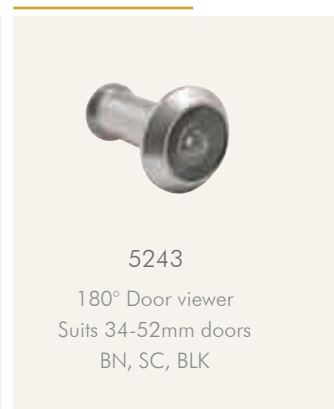
Cabin Hooks



• Finish: SC

Code	Length	Engaged Opening
5142	100mm	120mm
5143	150mm	185mm
5275	200mm	235mm
5276	250mm	290mm

DOOR VIEWER



5243
180° Door viewer
Suits 34-52mm doors
BN, SC, BLK

DOUBLE DOOR HARDWARE

BARREL BOLTS

Straight

Finishes: BN, CP, SC
5224 also available in: BLK, RB, SB

5209	100x25mm	20mm throw
5210	150x31mm	50mm throw
5224	150x31mm	30mm throw



Necked



Finishes: BN, CP, SC

5213	100x25mm	19mm throw
5214	150x31mm	25mm throw

Security Door Bolt



Finish: SC

1175	25mm bolt projection
------	----------------------

REVERSE BARREL BOLTS

Straight Throw

Finishes: BN, CP, SC, GN,
BLK, RB, SB

5225	150x31mm	40mm throw
------	----------	------------



Flush Bolts



Finishes: BN, CP, SC, BLK, RB, SB, VP

10423	152x19mm	24mm throw
-------	----------	------------



Sliding Action



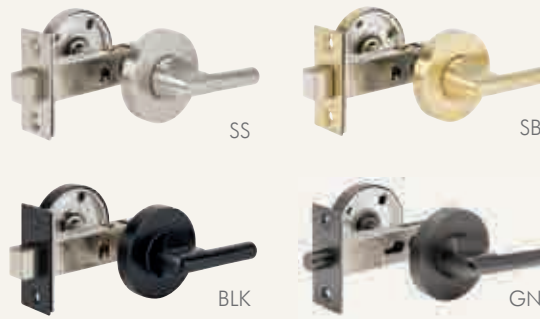
Finishes: SS, PSS

14000	150x21mm	25mm throw
-------	----------	------------

PRIVACY HARDWARE



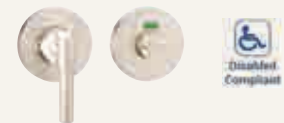
7032
55mm rose
BN, SC, GN, BLK, BN/CP



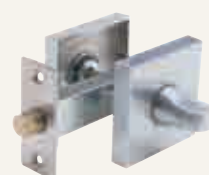
10421
Finishes: BLK, SB, SS, GN

Disabled Compliant Privacy & Turn

- 55mm Diameter
- 316 Marine Grade Construction
- Compliant with As.1428



316SS



8101
55x55mm plate
BN & SC



9343
54mm rose
BN, SB

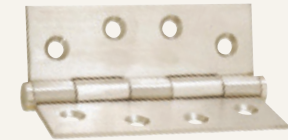


9348
Zurich Privacy Set
54mm rose
BN, GN, SB

STAINLESS STEEL HINGES

Butt Hinges

- Use on internal doors



5901 Loose Pin 100x75x2.5mm	BLK, SS, WHT, SS, PSSV
5902 Fixed Pin 100x75x2.5mm	RB, SB, VP
5903 Fixed Pin 100x75x2.5mm	GN, SS, BLK
5910 Fixed Pin 100x100x2.5mm	BLK, GN, SB, SS, WHT
5906 Loose Pin 85x60x2mm	SS



Bearing Hinges

- Use on external doors
- Finishes: 304SS, BLK, WHT
- Thickness: 3mm



5904 - Fixed Pin	100x75mm
5905 - Loose Pin	100x75mm
5927 - Fixed Pin	100x100mm

Lift Off Hinges

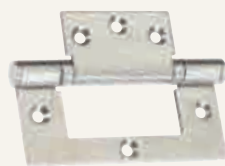
- Use on bathroom doors
- Thickness: 2.5mm
- Finishes: SS, BLK, GN, SB



5929 - Left Hand	100x75mm
5939 - Right Hand	100x75mm

Fast Fix Hinges

- Thickness: 2.5mm
- Finishes: SS, BLK, GN, WHT, SB



5908	100x70mm
------	----------

Lift Off Hinges Fast Fix

- Thickness: 2.5mm
- Finishes: SS, BLK



5928	100x43mm
------	----------

Wide Throw Butt Hinges

- Used when more clearance is required behind the door when opened at 180°.
- Thickness: 3.2mm
- Stainless Steel Finish



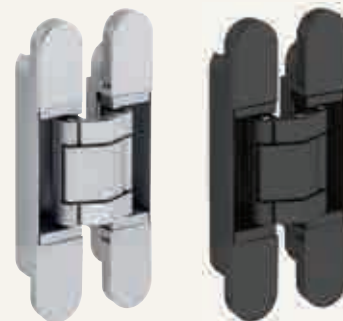
5909	100x125mm
5911	100x150mm
5925	100x175mm
5926	100x200mm

Concealed Hinges

- Completely concealed heavy duty hinge
- suitable for external and internal doors
- Allow three-dimensional adjustment
- Maximum opening angle of 180 degrees
- Comes with self-lubricating anti-friction-washers
- Finishes: Silver, Matt Black, White

5970	25x152mm	150 Degrees - 60Kg Rating*
5972	28x177mm	175 Degrees - 90Kg Rating*

* Where three hinges are used



DOOR CATCHES

Door Magnets

Concealed magnetic catches are a great substitute for a traditional roller bolt or door catch. These are incredibly quiet, completely concealed and much easier to install than a standard door catch.

- Use with dummy sets or cabinet handles

1180	25mm diameter
1262	22mm diameter



Roller Catches



1195	Heavy Duty Adjustable
Rebate kit to suit: 1196SS	

102x25mm faceplate
63x61mm case size
Finishes: SS, BLK, SB, GN

Ball Catch



5016
60x11mm
Finish: SC

DOOR CLOSERS

TS.9205 Architectural Door Closer



Flat Bar Armset
TS.9205.SRFB



Slide Armset
TS.9205.SRSA



- 35 years guarantee
- Power size EN2-5
- Adjustable closing speed & latch action
- Adjustable back check & delayed action
- Opening angle: 180 degrees
- Max door width: 1250mm
- Max door weight: 110kg
- Available as slide or scissor arm
- Fire Rated to Australian Standards

Available in 12 different Stocked Finishes*



ITS.11205 Concealed Closer



- 10 year guarantee
- Power Size (EN2-5)
- Adjustable closing & latch speed
- Max door width: 1250mm
- Max door weight: 110kg
- Max opening angle: 120°

Finish: SE



PIVOT HARDWARE

Floor Springs

TS.7004



EN4 Power Seize
Finishes: SS, GN, BLK & WHT

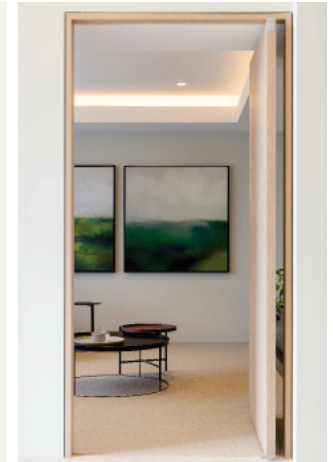
TS7306 Ultra Heavy Duty



Finish: SS

- 10 years Guarantee
- Adjustable Closing Speed
- Adjustable Latch Speed
- Back check
- Opening Angle: 130°
- Available as double or single action

Code	Max Weight	Max Width	Power size	Max Weight	Max Width
TS.7004.HO	150kg	1200mm	EN3-6	300kg	1400mm



Heel Closer

ITS.H3.HO.SS

Closer Features:

- Hold open angle: 90°
- Adjustable closing speed
- Opening angle of 150°
- Max door width: 1000mm
- Min door thickness: 40mm
- Max door weight: 100kg



LOCKS & CYLINDERS

Commercial Mortice Locks

Finishes: SS, BLK, GN, SB



1450 | 60mm Backset | Fire Rated



Euro Mortice Locks

Finishes: SS, BLK, GN, SB

1143 | 60mm Backset | 86mm Case Size



Oval Escutcheons

Finishes: BN, SC, BLK, GN, SB, WH

7020.O | 55mm Diameter



Euro Escutcheons

Finishes: BN, SC, BLK, GN, SB, WH

7020.2 | 55mm Diameter



Oval Cylinders

Finishes: BN, SC, BLK, GN, SB

1160 | comes with all Cams



Euro Cylinders - 70mm Length

1147 | Double Cylinder (Key/Key)

Finishes: BN, SC, BLK, GN



1148 | Single Cylinder (Key/Turn)

Finishes: BN, SB, BLK, GN, SB



Electric Strike - 100 Series



- Stainless steel face plate & keeper
- Weather resistant
- Compatible with latch depth up to 15mm
- 12 or 24VDC Operation
- Easily change from Power to Lock / Power to Open
- Non-Monitored
- 680kg holding strength
- Extension Lips Available



ESV.100 | Electric Strike - 12/24V PTL/PTO

Electric Strike - 200 Series



- Stainless steel face plate & keeper
- Compatible with latch depth up to 18mm
- 12 or 28VDC Operation
- Easily change from Power to Lock / Power to Open
- Non-Monitored or Monitored
- 680kg holding strength
- Extension Lips Available



ESV.200 | Electric Strike - 12/24V Non-monitored
ESV.200.MPFR | Electric Strike High Security, 12/24V Monitored Preloaded

Phoenix Commercial Locksets

Finishes: SC, BLK



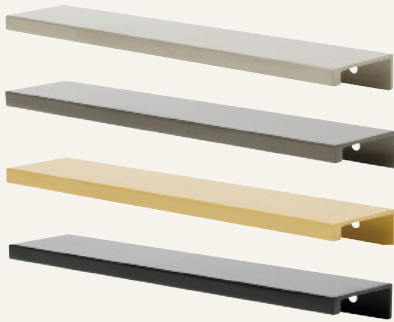
11019	Passage Set	11024	Storeroom Set
11021	Privacy Set	11025	Double Vestibule Set
11020	Entrance Set	11026	Double Communicating Set

- Suitable for 35 – 47mm thick doors
- 70mm backset as standard
- 75mm diameter rose
- C4, 6 pin keyway
- 10 year mechanical warranty
- Stainless Steel latchbolt
- Fire tested to AS1530.4
- Disabled compliant with AS.1428



CABINET HANDLES

Delta Elite Lip Pull



- Finishes: BN, BLK, GN, SB

Code	CRS	O/A
6820	160mm	200mm
6821	265mm	300mm



Minerva



- Width: 15.5mm
- Projection: 36mm
- Finishes: BN, SA
BLK & GN also available in some sizes

Code	CRS	O/A
6413	96mm	126mm
6414	160mm	190mm
6315	192mm	222mm
6316	288mm	318mm
16026	320mm	350mm
6415	448mm	478mm
16025	544mm	574mm

Nedlands



- Projection: 37mm
- Finishes: BN, BLK

KNURLED

Code	CRS	O/A
16053	128mm	139mm
16055	224mm	235mm

Florida Knob



- Projection: 32mm
- Finishes: BLK, BN, GN, SB

KNURLED

Code	D
16048	32mm

Malvern



- Projection: 31mm
- Finishes: BN, GN, BLK, SB

Code	CRS	O/A
16080	64mm	104mm
16082	160mm	200mm
16084	320mm	360mm

Manhattan



- Width: 15mm
- Projection: 30mm
- Finishes: BN, BLK

Code	CRS	O/A
16060	128mm	149mm
16062	192mm	210mm
16064	288mm	306mm



Manhattan Knob



- Projection: 27mm
- Finishes: BN & BLK

Code	O/A
16066	30x30mm



Mayfair



- Width: 12mm
- Projection: 40mm
- Finishes: BN, CP

Code	CRS	O/A
16070	128mm	152mm
16072	192mm	220mm
16075	288mm	335mm



Mayfair Knobs



Brushed Nickel Chrome Plate Satin Brass

- Finishes: BN, CP, SB

Code	D	P
16077	32mm	28mm



Mayfair Satin Brass



- Width: 12mm
- Projection: 40mm
- Finish: SB

Code	CRS	O/A
16070	128mm	152mm
16072	192mm	220mm

Zurich



KNURLED

- Projection: 30.5mm
- Finishes: BN, GN, SB

Code	CRS	O/A
16092	160mm	195mm



Zurich T-Knob



KNURLED

- Great for Wardrobe Doors too
- Projection: 34mm
- Finishes: BN, GN, SB

Code	D
10692	90mm

Marco Nero



- Width: 8mm
- Projection: 26mm
- Finish: BLK

Code	CRS	O/A
6336	96mm	122mm
6337	128mm	157mm
6338	160mm	193mm
6339	192mm	225mm
6382	320mm	356mm

Marco White



- Width: 8mm
- Projection: 26mm
- Finish: Matt White

Code	CRS	O/A
6337	128mm	149mm
6339	192mm	210mm
6382	320mm	356mm

Marco Satin Brass



- Width: 8mm
- Projection: 26mm
- Finish: Satin Brass

Code	CRS	O/A
6337	128mm	149mm
6339	192mm	210mm
6382	320mm	356mm

Marco Brushed Nickel



- Width: 8mm
- Projection: 26mm
- Finish: BN

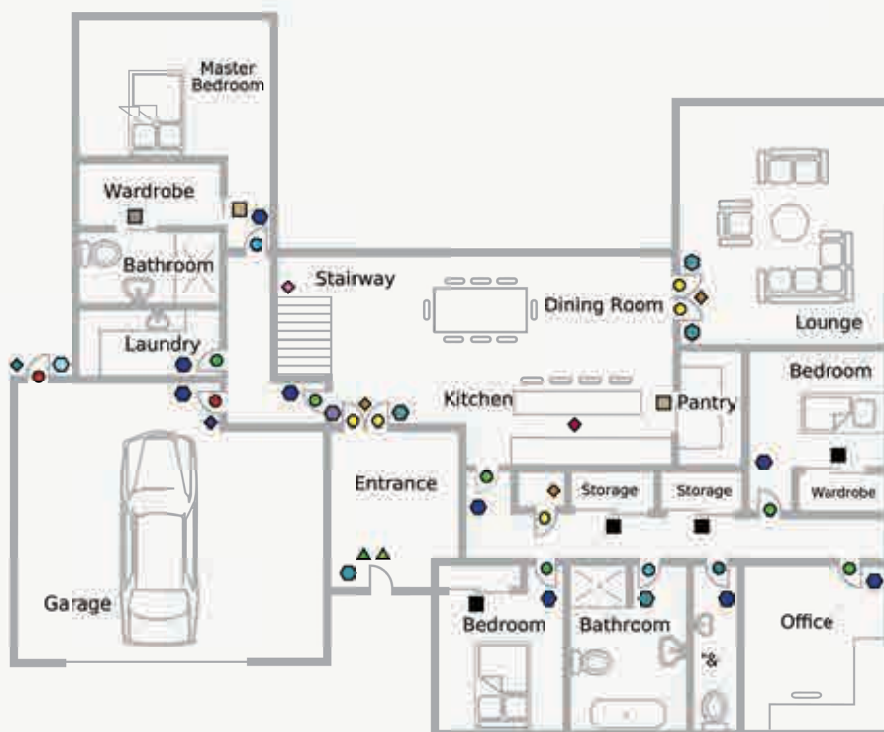
Code	CRS	O/A
6336	96mm	122mm
6337	160mm	193mm
6338	192mm	225mm
6339	192mm	225mm
6340	240mm	273mm
6382	320mm	356mm



SELECTING THE RIGHT DOOR HARDWARE FOR YOUR HOME

Typical Hardware Applications

TYPICAL HARDWARE APPLICATIONS



Key/Legend

- Entrance
 - ▲ Lock Kit
 - ▲ Pull Handles
- Door Furniture
 - Passage Set
 - Entrance/Locking Set
 - Privacy Set
 - Dummy Handles
- Sliding Door Hardware
 - Cavity Suite/Flush Pull Kit
 - Cavity Suite - Privacy
 - Flush Pulls
- Door Stops
 - Skirting Mount Doorstop
 - Floor Mount Doorstop
 - Overhead Doorstop
- Accessories
 - ◆ Door Closer
 - ◆ Cabinet Handles
 - ◆ Magnets
 - ◆ Stair Rail Brackets

Abbreviations:

∅	Diameter	o/a	Overall Length	NHO	Non Hold Open
D	Diameter	b/s	Backset	W	Width
P	Projection	crs	Screw/Bolt Centres	HO	Hold Open

Door Handle Styles:

Leverset	Passage Set	Privacy Set — Integrated	Privacy Set — Separate	Dummy Set
Pair of Levers	Includes leverset and latch	Includes leverset with push button on rose, and integrated privacy latch.	Includes leverset and latch with a separate privacy kit	Includes single lever and dummy fixing spindle



BAYSWATER

144 Beechboro Rd South
Bayswater, Perth
+61 8 9473 5100

ALBANY

68 Cockburn Rd
Albany
+61 8 9844 5200

BUNBURY

50 McCombe Road
Bunbury
+61 8 9724 8900

BUSSELTON

9 Trumper Drive,
Busselton
+61 8 9752 7900

GERALDTON

315 Place Road
Geraldton
+61 8 9960 5000

MANDURAH

25 Hampton Street
Mandurah
+61 8 9583 8000

visit www.mbsales.com.au for more information