



Home Collection

Welcome home



Product featured: Trilock Eclipse Allure



At Gainsborough we're all about opening a world of new style possibilities in door and access solutions.

For over fifty years we have built our reputation on developing and producing leading-edge door hardware - innovative levers and locks that work silently to reflect your style and needs.

With Gainsborough, you don't need to sacrifice style for security, because we know the most important thing isn't what's on your door, it's what's behind it.

Finding your style

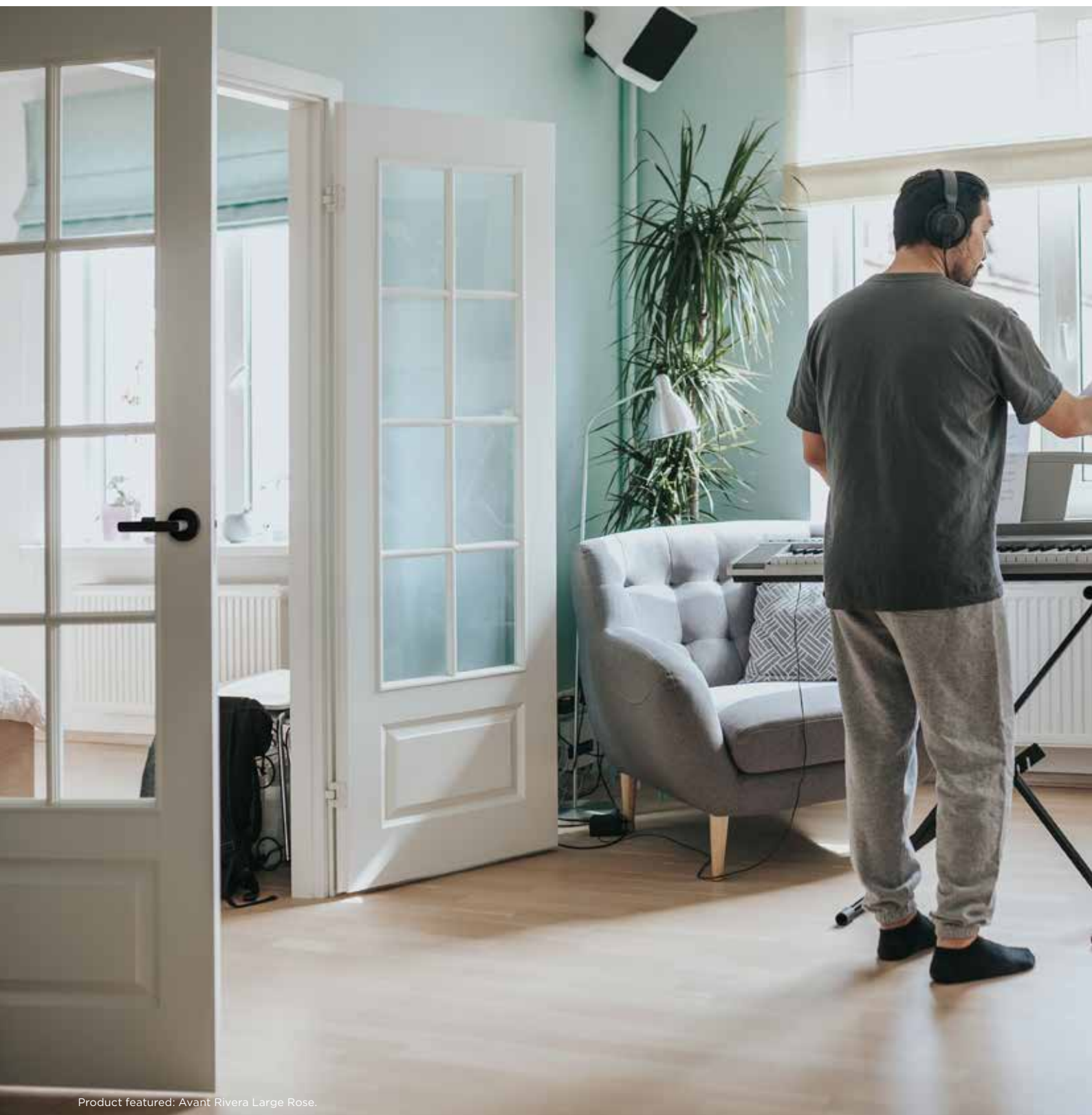
CONTENTS

Welcome	1	Mortice locks	54
Selecting your product	6	Security doors	56
Selecting your finish	8	Sliding security and patio doors	57
Technology and innovation	10	Classic knobs	58
Gainsborough Freestyle	12	Sliding cavity door sets	59
Trilock	16	Flush pulls	60
Trilock Omni	24	Accessories	61
Gainsborough Avant	30	Door seals and weather strips	63
Gainsborough Neue	36	Care and maintenance	64
Gainsborough Choice	40	Warranty	66
Gainsborough Ferro	48	Glossary	68
Pull handles	50	Installation guides	69

Gainsborough has solutions for all of your entire home.
Making the right selection is important. Finding your external,
internal or personal style hardware begins here.



The finishing touch that adds style, convenience and peace of mind to every home.



Product featured: Avant Rivera Large Rose.

Contemporary *style*

Door furniture shouldn't be an afterthought.

We pride ourselves on being at the forefront of design trends, consistently ensuring our products use the latest in contemporary materials and finishes.

Our products add the perfect finishing touch to any home or building, from the first impression of the entryway, to small accents of style in any room. And with our finger on the pulse, we're ready to adapt to the latest trends and continue to bring Gainsborough's signature style to Australian homes.

Making life *easy*

Gainsborough's products are made for everyday living.

Our focus is on people, and creating products that make their lives easier. It's why we invest in the latest technology that makes style and security simple from the first install, to coming home every single night.

Our goal isn't to complicate our customer's lives with the latest gadgets, but to simplify and improve their day-to-day through user friendly products, bringing innovation and convenience.

Peace *of mind*

For over 50 years, we've been proud to keep Australian families safe and secure in their homes.

It's a responsibility we take seriously, and it drives us to develop products that not only look great, but function as reliable, secure and trustworthy elements of your home. Peace of mind is built into every product.

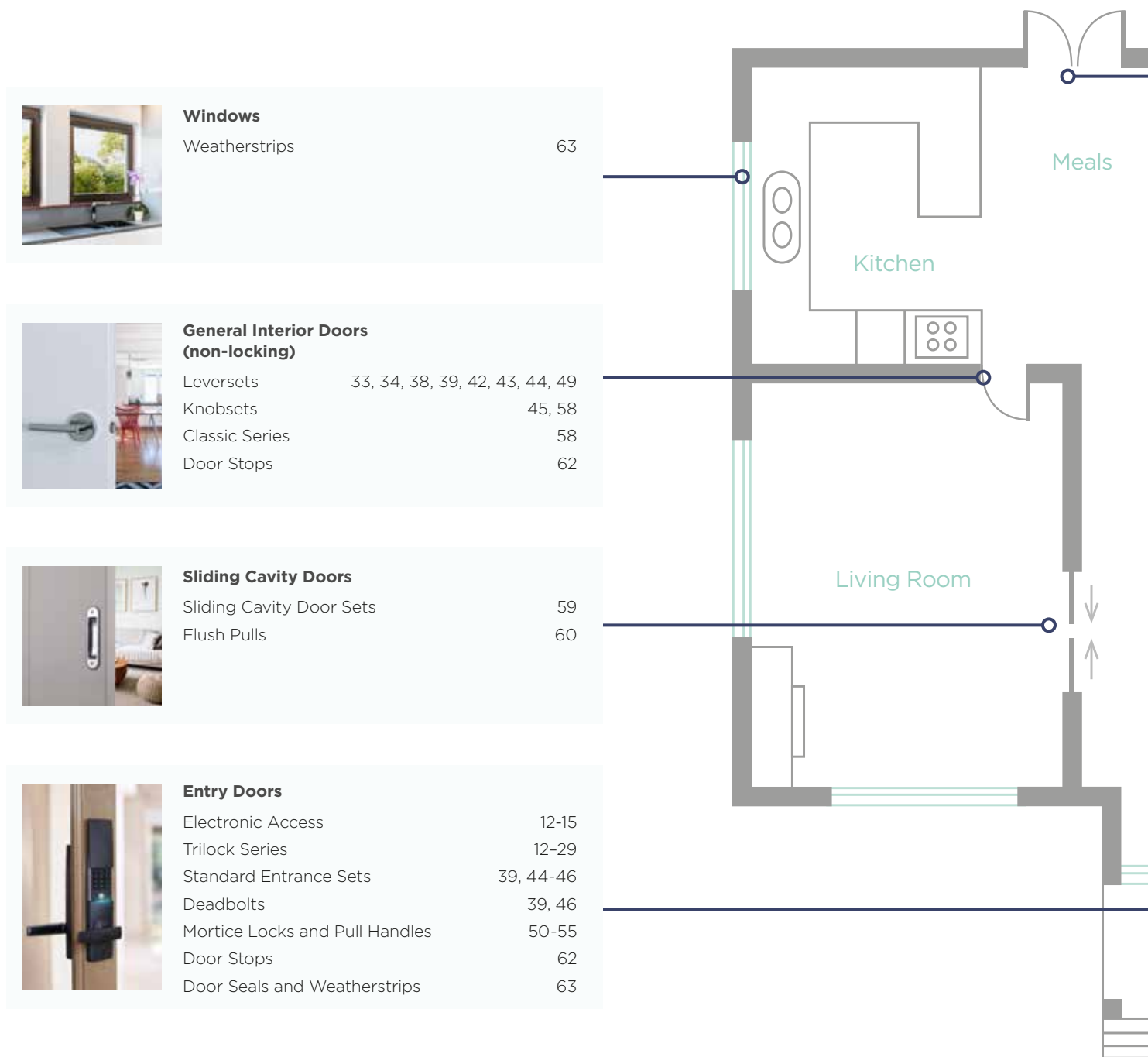
Gainsborough is the experienced and trusted name in door furniture that protects Australian homes and families.



Selecting your product

Choose the right products for every application.

Gainsborough offers a broad range of products to suit applications throughout the home. The following shows a house plan and serves to indicate the Gainsborough products available to suit the relevant door in the home. Page numbers are also shown adjacent to the products concerned, in order to provide you with an easy to find reference guide.



Windows

Weatherstrips 63



General Interior Doors (non-locking)

Leversets 33, 34, 38, 39, 42, 43, 44, 49
 Knobsets 45, 58
 Classic Series 58
 Door Stops 62



Sliding Cavity Doors

Sliding Cavity Door Sets 59
 Flush Pulls 60



Entry Doors

Electronic Access 12-15
 Trilock Series 12-29
 Standard Entrance Sets 39, 44-46
 Deadbolts 39, 46
 Mortice Locks and Pull Handles 50-55
 Door Stops 62
 Door Seals and Weatherstrips 63

Select the right hardware for your door.



Front Entrance



Back Doors



Garage Access



Bedrooms



Bathroom



Study/Office



Bedrooms



Living Areas



Laundry



Wardrobes



Closets

ENTRANCE

For entrance and external doors you want to lock.

PRIVACY SET

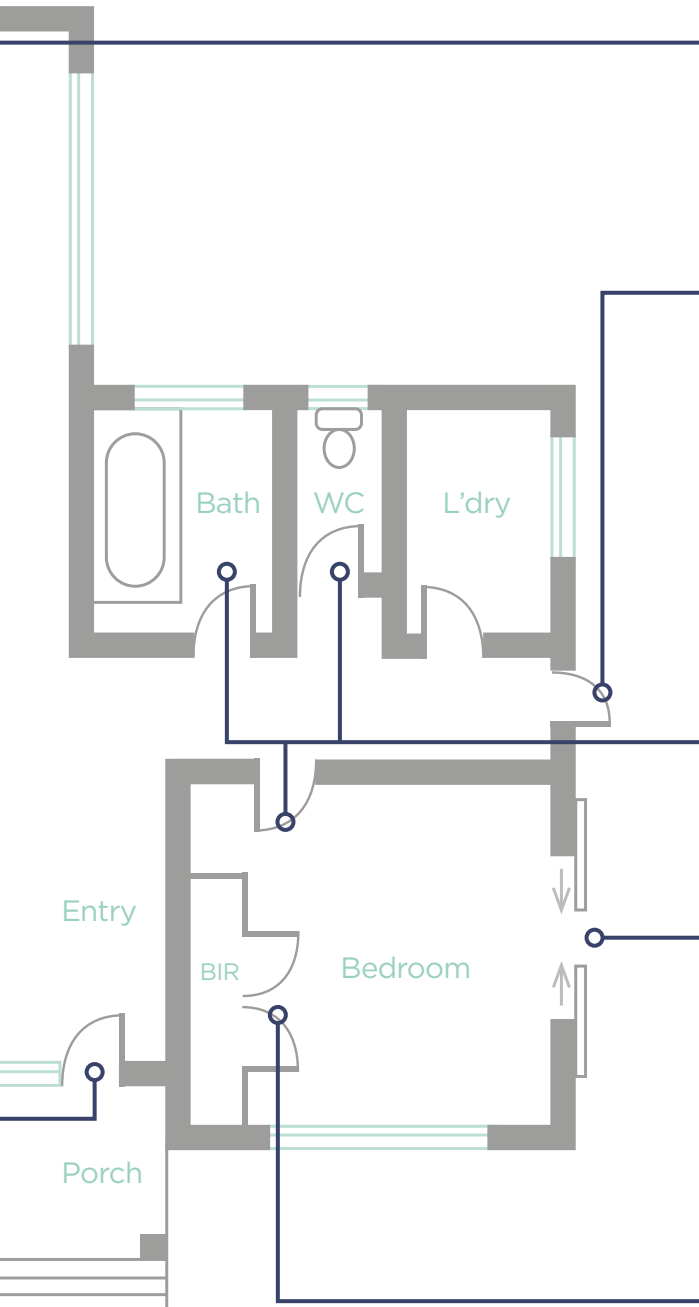
For internal doors that you want to lock.

PASSAGE SET

For internal doors that you don't want to lock.

DUMMY LEVER

For non-operation wardrobe or closet doors.



French Doors

Leversets	33, 34, 38, 39, 42, 43, 44, 49
Door Seals and Weatherstrips	63
Flush Bolts	62
Knobsets	45, 58
Deadbolts	39, 46



Security Screen Doors

Hinged Security Screen Door Locks	56
Pneumatic Door Closers	56
Sliding Security Screen Door Locks	57



Interior Doors for Bedroom or Bathroom (where privacy locking is required)

Leversets	33, 34, 38, 39, 42, 43, 44, 49
Knobsets	45, 58
Classic Series	58
Door Stops	62



Sliding Patio Doors

Patio Door Locks	57
------------------	----

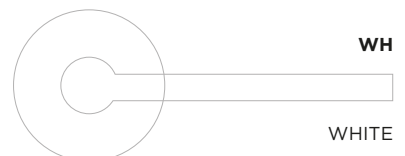
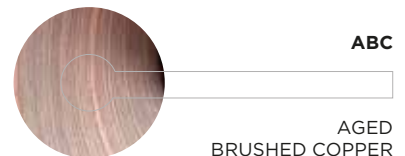
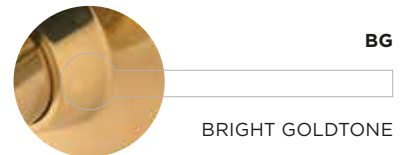


Wardrobe or Cupboard Doors

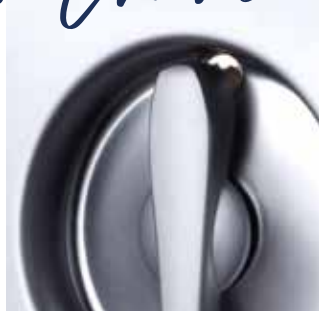
Leversets - Dummy Levers	33-34, 38-39, 42-44, 49
Knobsets - Dummy Knobs	45, 58
Classic Series - Dummy, Wardrobe or Cupboard Knobs	58
Flush Pulls	60

Finishes

From contemporary, modern and industrial to mirror-like Art Deco, Traditional Rustic or Hollywood Glam, Gainsborough has a finish to enhance your personal style.



Satin Chrome



Satin Graphite



Satin Brass



Matte Black



Bright Chrome



Award winning
innovation

Gainsborough is proud to be a market leader in innovation. Our award winning QuickFix™ and Freestyle™ technologies are just another way we make people's lives more convenient.

GAINSBOROUGH
freestyle



Smart locks that look smart.

The new Gainsborough Freestyles Electronic Trilock™ combines signature style with the latest technology.

Whether it's checking if you've locked the house, or if your family has arrived home, this smart lock gives you unparalleled convenience, peace of mind, and the freedom to move.

- Trilock®'s 3-in-1 functionality, with smart technology
- Keyless Entry via keypad or app
- Remote access, lock, deadlock or unlock your door using the Gainsborough Freestyle app on your mobile device.



Named the 'Smart Lock of the Year' by the international IoT Breakthrough Awards 2021.



Awarded a 2021 Good Design award for 'Outstanding Design and Innovation'.

TRILOCK



3 in 1 entrance sets.

Trilock® combines style and function for the Australian home.

Trilocks secure more new front doors in Australia than any other lock with its unique 3 in 1 technology.

- The push button lockset mode from inside of the door features a privacy button by simply turning the inside knob or lever
- Lever can easily be rotated during installation for use on left or right hand doors.



Gainsborough
Trilock
Licence No. 95313
© Standards Australia

The Trilock '3 in 1' locking mechanism has been awarded with an Australian Design Mark® for Good Design by Standards Australia.

Quick™ Fix



Innovation in installation.

The new QuickFix™ technology makes fixing door hardware a simple process of positioning, twisting and securing hardware onto the door.

- Brand new patented fixing design
- Installation in under 30 seconds (after latch and strike installation)
- No need to cut screws for different door thicknesses
- 2019 Good Design Award Australia winner.



Awarded a 2019 Good Design award for 'Outstanding Design and Innovation'.



The Gainsborough Freestyle Electronic Trilock® combines Gainsborough's signature style with the latest technology.

Whether it's checking if you've locked the house, or if your family has arrived home, this smart lock gives you unparalleled convenience, peace of mind and the freedom to move.

Enjoy Trilock®'s 3-in-1 functionality, now with Bluetooth smart technology.



Smart *lock.*
Smart *lock.*



Electronic Access

Freestyle Trilock

Features



Encrypted connection for advanced security



Remote access, lock, deadlock or unlock your door using the Gainsborough Freestyle app on your mobile device*



3-in-1 Function (Passage/Privacy/Dead Lock)



Keyless Entry via keypad or app



Monitor your lock status



Battery operated using 4x AA alkaline batteries for up to 12 months with normal use



Assign, invite and schedule up to 20 users



Emergency override keys included

*When used with the Gainsborough Freestyle Wi-Fi Bridge

Easy to install

The Gainsborough Freestyle Electronic Trilock® can retrofit existing mechanical Trilocks and many other standard knob and lever entrance sets.

gainsboroughhardware.com.au/freestyle



Named the 'Smart Lock of the Year' by the international IoT Breakthrough Awards 2021.



Awarded a 2021 Good Design award for 'Outstanding Design and Innovation'.

Match with Aurora leverset. See page 39.



FREESTYLE TRILOCK URBAN AURORA
 PICTURED FINISH Brushed Satin Chrome
 PART NUMBER GFS8951AUR



WI-FI BRIDGE AND DOOR SENSOR
 AVAILABLE FINISH White
 PART NUMBER GFS001WHV



PART NO. GFS001WHV

Add extra convenience and peace of mind with remote access.

Gainsborough Freestyle Wi-Fi Bridge and Door Sensor (sold separately) will give you the convenience to operate your door from anywhere in the world.

- Know when your family have arrived home
- Receive notifications if your door is ajar
- Get alert when lock is tampered with
- Manage (add/delete) users.

Ask your favourite hardware store or retailer about the Wi-Fi Bridge and Door Sensor Kit.

Accessories

These accessories are available in SS and MB finishes.

THICK DOOR KIT FOR 50MM DOORS
 PART NUMBER GFS50KIT

DOOR POSITION SENSOR
 PART NUMBER GFS002BL

For use in household with a second Freestyle Trilock connected to one Wi-Fi Bridge.

3 in 1 *entrance sets*

TRILOCK

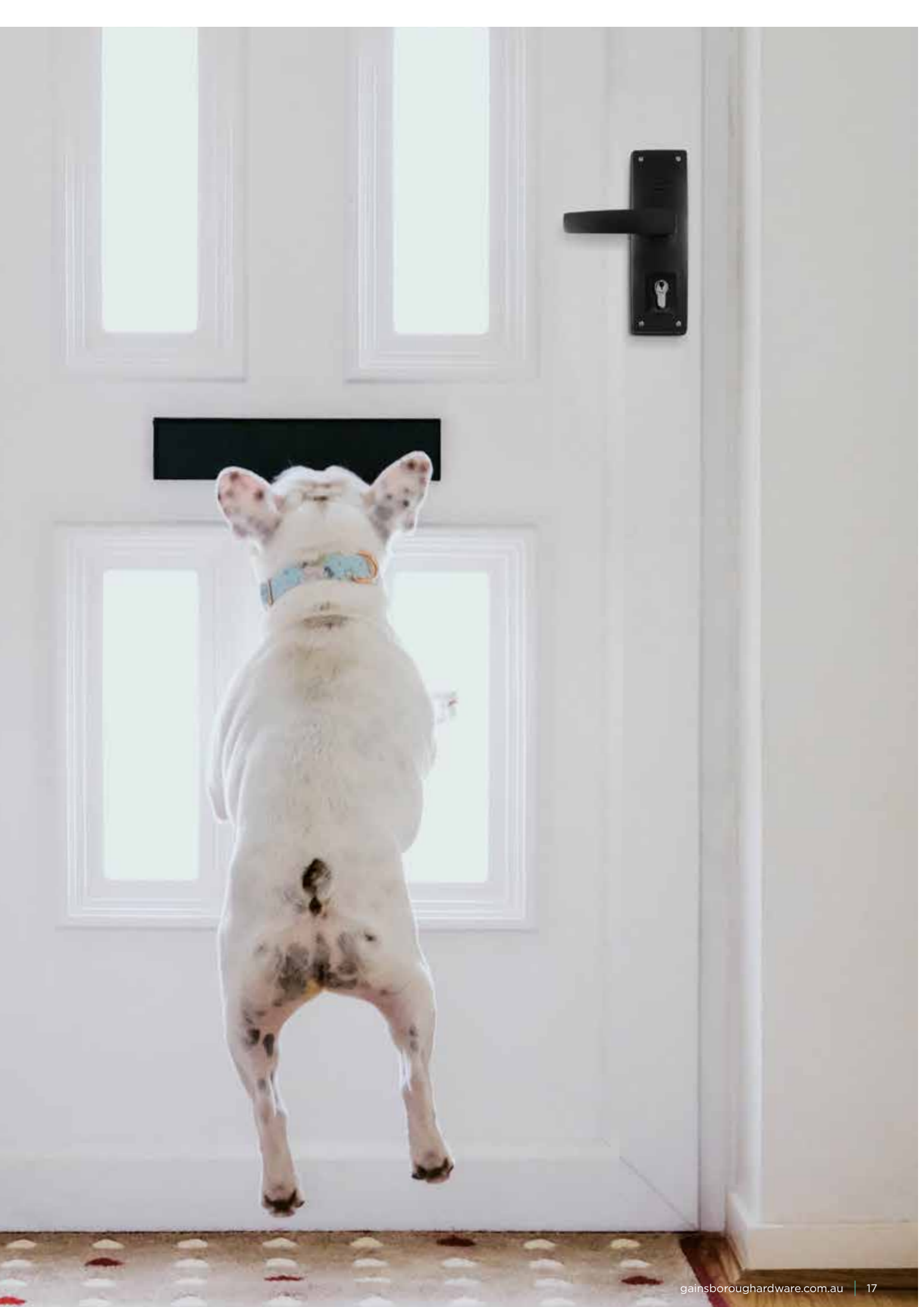
Trilocks secure more front doors in Australia than any other lock with its unique 3 in 1 technology.

Choose from the classic chic of the Trilock Traditional, the sleek, modern look of Trilock Contemporary, minimalist aesthetic of the Trilock Eclipse, through to the premier style and engineering of the Trilock Omni Pull Handle.

Trilocks set the standard from your front doorstep, inspiring you to express your signature style with complementary levers throughout your home. All Trilocks feature state of the art tarnish-resistant finishes that can be matched in look and feel to your favourite interior levers.



Product featured: Trilock Urban Aurora.



Gainsborough *Trilock* design offers a combination of lockset, deadbolt and passage functions in one system.



The push button lockset mode from inside of the door features panic release by simply turning the inside knob or lever.

Levers can be easily rotated during installation for use on left or right hand doors.

When unlocked and unsnibbed, Trilock operates as a normal passage set.

Lock body readily replaces old keylocks fitted to a standard 54mm hole.

Single handed operation
(key operates all functions of the lock).

Deadbolt 20mm throw for extra security.

Solid brass double 5 pin Euro profile cylinder can be keyed alike to other Gainsborough products for same key convenience.



Gainsborough
Trilock
Licence No. 00111
Standards Australia

The Trilock '3 in 1' locking mechanism has been awarded with an Australian Design Mark* for Good Design by Standards Australia.



Lockset with safety

Pressing the button on the inside of the door engages the Trilock lockset mode. This locks the door from the outside, however it is safe to exit without a key in an emergency by simply turning the inside knob or lever.

Deadbolt security

Trilock houses a key-operated double cylinder deadbolt, with a sturdy 20mm throw, to keep possessions and valuables safe whilst the home is unoccupied. Single cylinder version features inside turn-button.

Passage set convenience

When Trilock is unlocked and unsnibbed, it operates as a standard passage set, allowing free access in or out of the home.

Exterior side

Interior side



DOUBLE CYLINDER

Key from either side will lock or unlock deadbolt.*



SINGLE CYLINDER

Key from outside or turn-button from inside will lock or unlock deadbolt.*



DUMMY SET

A non-operational handle set for the fixed side of a double door.

*ALSO FEATURES OTHER FUNCTIONS:

- Push-button lockset mode
- Passage set convenience when unlocked and unsnibbed.

Match with Aurora leverset. See page 39.



TRILOCK URBAN AURORA
DOUBLE CYLINDER
PICTURED FINISH Brushed Satin Chrome
PART NUMBER 8951AUR



TRILOCK URBAN AURORA
DUMMY TRIM SET
PICTURED FINISH Matt Black
PART NUMBER 8201AUR (Visual Pack)



The Trilock Eclipse Allure adds style and security to this charming entrance.

Match with Angular leverset. See page 38.



TRILOCK CONTEMPORARY ANGULAR DOUBLE CYLINDER

PICTURED FINISH Satin Chrome
PART NUMBER 8951ANG (Visual Pack)
8901ANG (Trade Pack)



TRILOCK CONTEMPORARY ANGULAR DUMMY TRIM SET

PICTURED FINISH Satin Chrome
PART NUMBER 8201ANG



TRILOCK CONTEMPORARY ALIGN DOUBLE CYLINDER

PICTURED FINISH Satin Chrome
PART NUMBER 8951ALI (Visual Pack)
8901ALI (Trade Pack)



TRILOCK CONTEMPORARY ALIGN DUMMY TRIM SET

PICTURED FINISH Satin Chrome
PART NUMBER 8201ALI

Match with Enchant leverset. See page 49.



Interior Exterior

TRILOCK ECLIPSE ENCHANT
DOUBLE CYLINDER

PICTURED FINISH Stainless Steel
PART NUMBER 8904ENC



Interior Exterior

TRILOCK ECLIPSE ENCHANT
DUMMY TRIM SET

PICTURED FINISH Stainless Steel
PART NUMBER 8204ENC

Match with Allure leverset. See page 49.



Interior Exterior

TRILOCK ECLIPSE ALLURE
DOUBLE CYLINDER

PICTURED FINISH Polished Stainless Steel
PART NUMBER 8904ALL



Interior Exterior

TRILOCK ECLIPSE ALLURE
DUMMY TRIM SET

PICTURED FINISH Polished Stainless Steel
PART NUMBER 8204ALL



TRILOCK TRADITIONAL LEVER
DOUBLE CYLINDER
PICTURED FINISH Satin Chrome
PART NUMBER 895TLE (Visual Pack)
890TLE (Trade Pack)



TRILOCK TRADITIONAL LEVER
DUMMY TRIM SET
PICTURED FINISH Bright Chrome
PART NUMBER 820TLE



TRILOCK TRADITIONAL KNOBSET
DOUBLE CYLINDER
PICTURED FINISH Bright Chrome
PART NUMBER 895TRI (Visual Pack)
890TRI (Trade Pack)



TRILOCK TRADITIONAL KNOBSET
DUMMY TRIM SET
PICTURED FINISH Bright Chrome
PART NUMBER 820TRI

TRILOCK™

Omni & Omni Accent

The Trilock Omni makes a statement entrance on large format doors.

This pull handle range makes a statement entrance on both large and small format doors with its style and elegance, combined with the trusted Trilock 3-in-1 technology.

Featuring a 600mm pull handle with a cleverly concealed lever on the exterior, the Trilock Omni is the perfect solution for a minimalist look. Create the same aesthetic for standard doors with the Omni Accent featuring a 450mm slimline pull handle.

Available in Double Cylinder and Dummy Trim options.





Match with Allure leverset. See page 49.



Interior Exterior

TRILOCK OMNI ECLIPSE ALLURE
DOUBLE CYLINDER

PICTURED FINISH Polished Stainless Steel
PART NUMBER 8905ALL



Interior Exterior

TRILOCK OMNI ECLIPSE ALLURE
DUMMY TRIM SET

PICTURED FINISH Polished Stainless Steel
PART NUMBER 8205ALL



Match with Enchant leverset. See page 49.



Interior Exterior

TRILOCK OMNI ECLIPSE ENCHANT
DOUBLE CYLINDER

PICTURED FINISH Stainless Steel
PART NUMBER 8905ENC



Interior Exterior

TRILOCK OMNI ECLIPSE ENCHANT
DUMMY TRIM SET

PICTURED FINISH Stainless Steel
PART NUMBER 8205ENC

OMNI *Back to Back*



Interior Exterior

TRILOCK OMNI
BACK TO BACK DOUBLE CYLINDER

PICTURED FINISH Stainless Steel
PART NUMBER 8905BB



Interior Exterior

TRILOCK OMNI BACK TO BACK
DUMMY TRIM SET

PICTURED FINISH Matt Black
PART NUMBER 8205BB

Match with Allure leverset. See page 49.



Interior Exterior

OMNI ACCENT ECLIPSE ALLURE
DOUBLE CYLINDER

PICTURED FINISH Stainless Steel
PART NUMBER 8906ALL



Interior Exterior

OMNI ACCENT ECLIPSE ALLURE
DUMMY TRIM SET

PICTURED FINISH Matt Black
PART NUMBER 8206ALL



Interior Exterior

OMNI ACCENT BACK TO BACK
DOUBLE CYLINDER

PICTURED FINISH Stainless Steel
PART NUMBER 8906BB



Interior Exterior

OMNI TRILOCK ACCENT BACK TO
BACK DUMMY TRIM SET

PICTURED FINISH Matt Black
PART NUMBER 8206BB



Gainsborough

AVANT

The Avant series represents Gainsborough's premium offering.

The series showcases the perfect finishing touch with extensive on-trend finishes and leading edge styles to ensure the range perfectly suits a variety of interior designs.

It also includes the time saving technology of Gainsborough's award winning QuickFix™ system.



Design trends and premium
finishes for *special homes*



AVANT *Alba*

Alba's long straight lines and elegant thin profile provides a modern look, perfectly suited to most minimalist interior designs. Matt black's striking, versatile appearance bridges traditional and modern styles.

The lever, available in the large 64mm rose and small 57mm rose is constructed of high purity zinc alloy.

AVANT *Rivera*

The Rivera lever with its broad front profile and rounded corners, features a finger cut out at the base for additional comfort. Satin graphite is a cool yet welcoming finish that flatters and complements any décor style.

The lever, available in the large 64mm rose and small 57mm rose is constructed of high purity zinc alloy.

AVANT *Sierra*

Sierra's front profile taper and wide surface makes it comfortable to use while creating a contemporary and bespoke designer tone. Bold without being over the top, satin brass gives the perfect amount of understated style.

The lever, available in the large 64mm rose and small 57mm rose is constructed of high purity zinc alloy.



Product featured:
Avant Rivera Large Rose.



LARGE 64MM ROSE

AVAILABLE FINISHES BC BSC MB SB SG



ALBA PASSAGE LEVERSET*
PICTURED FINISH Matt Black
PART NUMBER 700ALBLR

*Available with and without latch.



ALBA PRIVACY LEVERSET
PICTURED FINISH Matt Black
PART NUMBER 710ALBLR



ALBA DUMMY TRIM
PICTURED FINISH Matt Black
PART NUMBER 720ALBLR

LARGE 64MM ROSE

AVAILABLE FINISHES BC BSC MB SB SG



RIVIERA PASSAGE LEVERSET*
PICTURED FINISH Satin Graphite
PART NUMBER 700RIVLR

*Available with and without latch.



RIVIERA PRIVACY LEVERSET
PICTURED FINISH Satin Graphite
PART NUMBER 710RIVLR



RIVIERA DUMMY TRIM
PICTURED FINISH Satin Graphite
PART NUMBER 720RIVLR

LARGE 64MM ROSE

AVAILABLE FINISHES BC BSC MB SB SG



SIERRA PASSAGE LEVERSET*
PICTURED FINISH Satin Brass
PART NUMBER 700SIELR

*Available with and without latch.



SIERRA PRIVACY LEVERSET
PICTURED FINISH Satin Brass
PART NUMBER 710SIELR



SIERRA DUMMY TRIM
PICTURED FINISH Satin Brass
PART NUMBER 720SIELR

QUICKFIX PASSAGE LATCH
PICTURED FINISH Satin Brass
PART NUMBER 480QF



Matching latch finish.



RIVERA PASSAGE LEVERSET*

PICTURED FINISH Matt Black

PART NUMBER 700RIV

*Available with and without latch.



SIERRA PASSAGE LEVERSET*

PICTURED FINISH Aged Brushed Copper

PART NUMBER 700SIE

*Available with and without latch.



RIVERA PRIVACY LEVERSET

PICTURED FINISH Matt Black

PART NUMBER 710RIV



SIERRA PRIVACY LEVERSET

PICTURED FINISH Aged Brushed Copper

PART NUMBER 710SIE



RIVERA DUMMY TRIM

PICTURED FINISH Matt Black

PART NUMBER 720RIV



SIERRA DUMMY TRIM

PICTURED FINISH Aged Brushed Copper

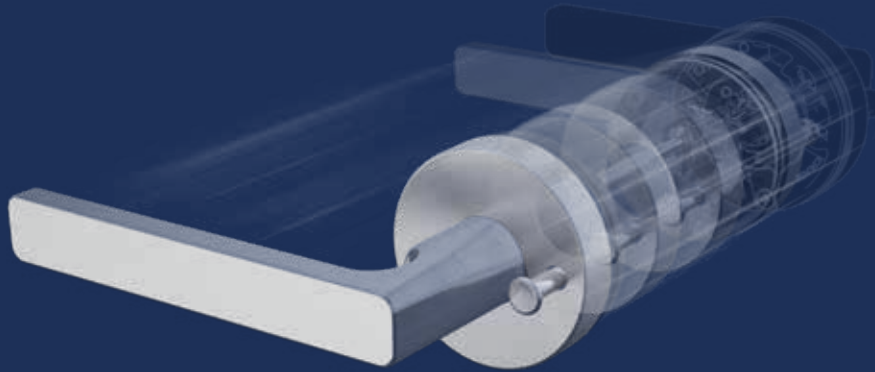
PART NUMBER 720SIE

AVAILABLE FINISHES



Introducing

QuickTM Fix



Save time & money with the QuickFix 30-second installation.

4 EASY STEPS

- ① Position furniture
 - ② Rotate bezel
 - ③ Tighten screws
 - ④ Fit rose cover
- ✓ Job done

The new QuickFixTM technology makes fixing door hardware a simple process of positioning, twisting and securing hardware onto the door.

- Brand new patented fixing design
- Installation in under 30 seconds (after latch and strike installation)
- No need to cut screws for different door thicknesses
- 2019 Good Design Award Australia winner.



Awarded a 2019 Good Design award for 'Outstanding Design and Innovation'.

Gainsborough

NEUE

The Neue series represents Gainsborough's mid-range offering.

With designer detailing and finishes, the Neue series creates a long lasting, contemporary style for every home.

Match Neue finishes with the Gainsborough Trilock® series to easily create a consistent look from the front door to the back.



A choice of *contemporary*
styles and finishes
for the entire home.





ANGULAR PASSAGE ROUND LEVERSET

PICTURED FINISH Satin Chrome
 PART NUMBER 1905ANG (Visual Pack)
 1900ANG (Trade Pack - latch sold separately)



ANGULAR PRIVACY ROUND LEVERSET

PICTURED FINISH All Matt Black
 PART NUMBER 1915ANG (Visual Pack)
 1910ANG (Trade Pack)



ANGULAR DUMMY ROUND LEVER

PICTURED FINISH Satin Chrome
 PART NUMBER 1920ANG



ANGULAR PASSAGE SQUARE LEVERSET

PICTURED FINISH Satin Chrome
 PART NUMBER 1805ANG (Visual Pack)
 1800ANG (Trade Pack - latch sold separately)



ANGULAR PRIVACY SQUARE LEVERSET

PICTURED FINISH All Matt Black
 PART NUMBER 1815ANG (Visual Pack)
 1810ANG (Trade Pack)



ANGULAR DUMMY SQUARE LEVER

PICTURED FINISH Satin Chrome
 PART NUMBER 1820ANG



*MB not available in Trade Pack.



AURORA ENTRANCE LEVERSET
 PICTURED FINISH Matt Black*
 PART NUMBER 1940AUR



AURORA PASSAGE LEVERSET
 PICTURED FINISH Brushed Satin Chrome
 PART NUMBER 1905AUR (Visual Pack)
 1900AUR (Trade Pack - latch sold separately)*



AURORA DUMMY LEVERSET
 PICTURED FINISH Brushed Satin Chrome
 PART NUMBER 1920AUR



AURORA PRIVACY LEVERSET
 PICTURED FINISH All Matt Black
 PART NUMBER 1915AUR (Visual Pack)
 1910AUR (Trade Pack)*



SMOOTH SQUARE DEADBOLT DOUBLE CYLINDER
 PICTURED FINISH Satin Chrome
 PART NUMBER 1851SM
 AVAILABLE FINISHES SC. MB. BC.



SMOOTH ROUND DEADBOLT DOUBLE CYLINDER
 PICTURED FINISH Bright Chrome
 PART NUMBER 1951SM
 AVAILABLE FINISHES SC. BC. MB. BSC.



SMOOTH SQUARE DEADBOLT SINGLE CYLINDER
 PICTURED FINISH Satin Chrome
 PART NUMBER 1846SM
 AVAILABLE FINISHES SC. MB. BC.



SMOOTH ROUND DEADBOLT SINGLE CYLINDER
 PICTURED FINISH Bright Chrome
 PART NUMBER 1946SM
 AVAILABLE FINISHES SC. MB. BC.

Gainsborough

CHOICE



Form, function and design
combine to make your

style statement



The Choice series represents
Gainsborough's entry level
offering.

This affordable range has a unique style, ranging from classic
lever design, smooth contours or a more contemporary styled
lever with crisp edges.



CHOICE *Lianna*

AVAILABLE FINISHES BC MB* SC

*MB only available in Trade Pack.



LIANNA PASSAGE LEVERSET
 PICTURED FINISH Bright Chrome
 PART NUMBER 105LIA (Visual Pack)
 100LIA (Trade Pack - latch sold separately)



LIANNA PRIVACY LEVERSET
 PICTURED FINISH Bright Chrome
 PART NUMBER 115LIA (Visual Pack)
 110LIA (Trade Pack)



LIANNA DUMMY LEVER
 PICTURED FINISH Bright Chrome
 PART NUMBER 120LIAL (Left Handed)
 120LIAR (Right Handed)

CHOICE *Amelia*

AVAILABLE FINISHES BC MB* SC

*MB only available in Trade Pack



AMELIA PASSAGE LEVERSET
 PICTURED FINISH Satin Chrome
 PART NUMBER 105AME (Visual Pack)
 100AME (Trade Pack - latch sold separately)



AMELIA PRIVACY LEVERSET
 PICTURED FINISH Satin Chrome
 PART NUMBER 115AME (Visual Pack)
 110AME (Trade Pack)



AMELIA DUMMY LEVERSET
 PICTURED FINISH Satin Chrome
 PART NUMBER 120AMEL (Left Handed)
 120AMER (Right Handed)

CHOICE *Carla*

AVAILABLE FINISHES BC SC



CARLA PASSAGE LEVERSET
 PICTURED FINISH Bright Chrome
 PART NUMBER 105CAR



CARLA PRIVACY LEVERSET
 PICTURED FINISH Bright Chrome
 PART NUMBER 115CAR



CARLA DUMMY LEVER
 PICTURED FINISH Bright Chrome
 PART NUMBER 120CARL (Left Handed)
 120CARR (Right Handed)

CHOICE *Florence*

AVAILABLE FINISHES   BC SC



FLORENCE PASSAGE LEVERSET
PICTURED FINISH Satin Chrome
PART NUMBER 105FLO



FLORENCE PRIVACY LEVERSET
PICTURED FINISH Satin Chrome
PART NUMBER 115FLO



FLORENCE DUMMY LEVER
PICTURED FINISH Satin Chrome
PART NUMBER 120FLOL (Left Handed)
120FLOR (Right Handed)

CHOICE *Bailey*

AVAILABLE FINISHES   BC SC



BAILEY PASSAGE LEVERSET
PICTURED FINISH Satin Chrome
PART NUMBER 105BAI



BAILEY PRIVACY LEVERSET
PICTURED FINISH Satin Chrome
PART NUMBER 115BAI



BAILEY DUMMY LEVER
PICTURED FINISH Satin Chrome
PART NUMBER 120BAIL (Left Handed)
120BAIR (Right Handed)

CHOICE *Olive*

AVAILABLE FINISHES   BC SC



OLIVE PASSAGE LEVERSET
PICTURED FINISH Bright Chrome
PART NUMBER 105OLI



OLIVE PRIVACY LEVERSET
PICTURED FINISH Bright Chrome
PART NUMBER 115OLI



OLIVE DUMMY LEVER
PICTURED FINISH Bright Chrome
PART NUMBER 120OLIL (Left Handed)
120OLIR (Right Handed)



AMBASSADOR ENTRANCE LEVERSET

PICTURED FINISH Satin Chrome
PART NUMBER 540AMB



AMBASSADOR PRIVACY LEVERSET

PICTURED FINISH Satin Chrome
PART NUMBER 510AMB



AMBASSADOR PASSAGE LEVERSET

PICTURED FINISH Satin Chrome
PART NUMBER 500AMB



AMBASSADOR DUMMY LEVER

PICTURED FINISH Satin Chrome
PART NUMBER 505AMB



Product featured: Amelia Passage Leverset.



GOVERNOR COMBINATION ENTRANCE KNOBSET

PICTURED FINISH Stainless Steel
PART NUMBER 8701



GOVERNOR PRIVACY KNOBSET

PICTURED FINISH Stainless Steel
PART NUMBER 810GOV



GOVERNOR ENTRANCE KNOB LOCKSET

PICTURED FINISH Stainless Steel
PART NUMBER 840GOV



GOVERNOR DUMMY KNOB

PICTURED FINISH Stainless Steel
PART NUMBER 805GOV



TERRACE ENTRANCE KNOBSET

PICTURED FINISH Polished Stainless Steel
PART NUMBER 540TER



TERRACE PASSAGE KNOBSET

PICTURED FINISH Stainless Steel
PART NUMBER 500TER



TERRACE PRIVACY KNOBSET

PICTURED FINISH Stainless Steel
PART NUMBER 510TER



TERRACE COMBINATION SET

PICTURED FINISH Polished Stainless Steel
PART NUMBER 570TER



TERRACE DUMMY KNOB

PICTURED FINISH Stainless Steel
PART NUMBER 505TER

CHOICE *First Impressions*

AVAILABLE FINISHES  SS

Gainsborough's stylish entry sets feature durable construction and add elegance to any doorway and adjustable 60mm or 70mm backsets.



FIRST IMPRESSIONS ENTRY SET
 AVAILABLE FINISH Stainless Steel
 PART NUMBER 885

Note: Knobset available with a 60mm backset only.

CHOICE *Deadbolts*

AVAILABLE FINISHES  PB  PSS  SS

Smart and Secure - complement your Choice Levers with a Deadbolt in either Single or Double Cylinder.



ROUND DEADBOLT SINGLE CYLINDER
 PICTURED FINISH Stainless Steel
 PART NUMBER 545



ROUND DEADBOLT DOUBLE CYLINDER
 PICTURED FINISH Stainless Steel
 PART NUMBER 550



Gainsborough
FERRO

Stainless steel & durable
Timeless designs



Gainsborough Ferro Collection comprises of superb quality internal and external hardware made from stainless steel.

Proven to be more resistant to corrosion when exposed to salt spray, than other door hardware materials.

Made from 316 marine-grade steel, our Enchant or Allure internal levers and the Trilock Omni Pull Handle range are a perfect solution if you live in the coastal areas of Australia, or simply seek highly durable and timeless designs for your home.



ENCHANT PASSAGE
ROUND LEVERSET

PICTURED FINISH Stainless Steel
PART NUMBER 2900ENC



ENCHANT DUMMY
ROUND LEVER

PICTURED FINISH Stainless Steel
PART NUMBER 2921ENC



ROUND PRIVACY ADAPTOR

PICTURED FINISH Stainless Steel
PART NUMBER 2909
AVAILABLE FINISHES SS, PSS.



ENCHANT PASSAGE
SQUARE LEVERSET

PICTURED FINISH Stainless Steel
PART NUMBER 2800ENC



ENCHANT DUMMY SQUARE
LEVER

PICTURED FINISH Stainless Steel
PART NUMBER 2821ENC



SQUARE PRIVACY ADAPTOR

PICTURED FINISH Stainless Steel
PART NUMBER 2809
AVAILABLE FINISHES SS, PSS.



ALLURE PASSAGE ROUND LEVERSET

PICTURED FINISH Polished Stainless Steel
PART NUMBER 2900ALL



ALLURE DUMMY ROUND LEVER

PICTURED FINISH Polished Stainless Steel
PART NUMBER 2921ALL



ALLURE PASSAGE SQUARE LEVERSET

PICTURED FINISH Polished Stainless Steel
PART NUMBER 2800ALL



ALLURE DUMMY SQUARE LEVER

PICTURED FINISH Polished Stainless Steel
PART NUMBER 2821ALL

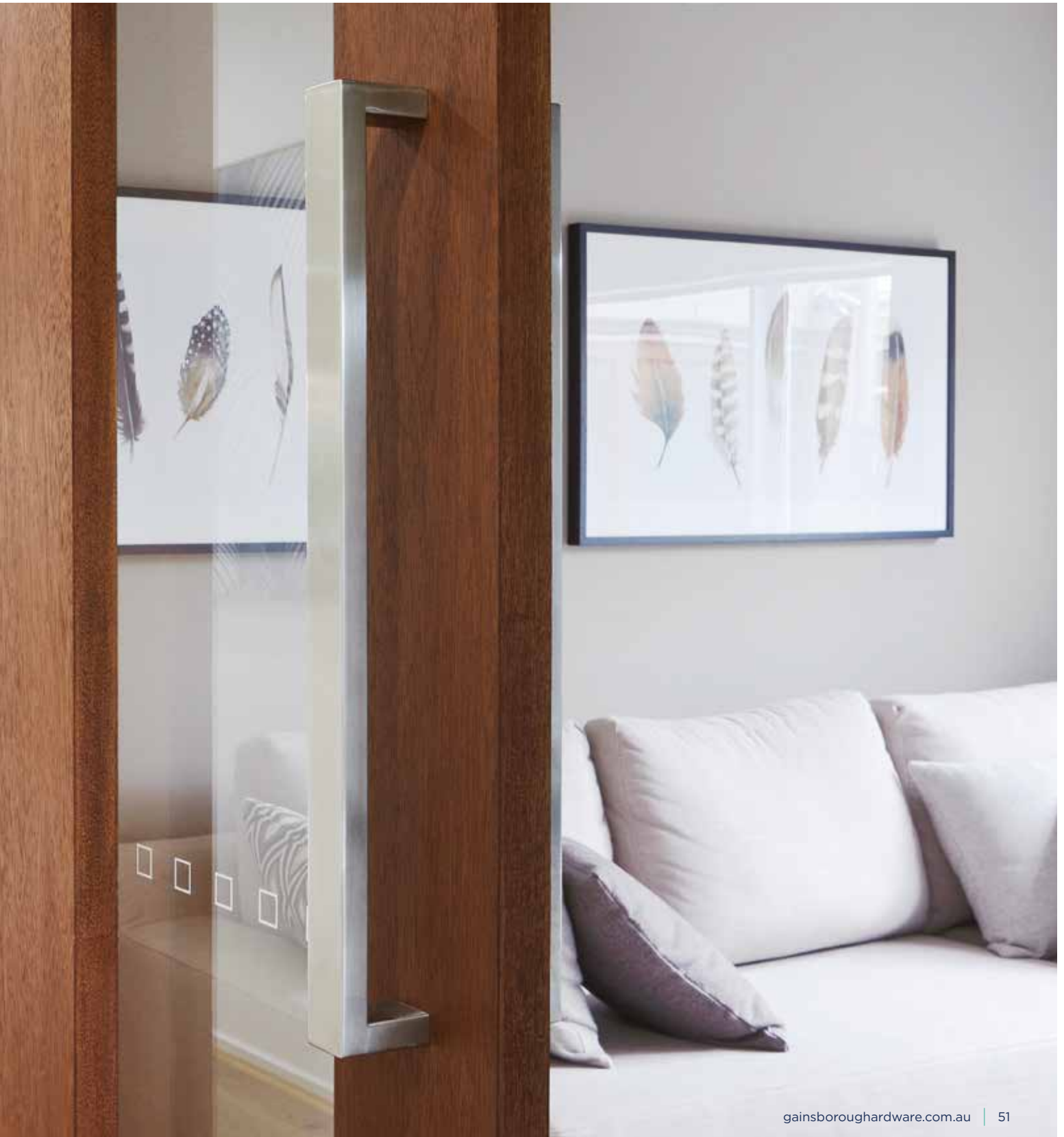
Superior styling and

unparalleled protection

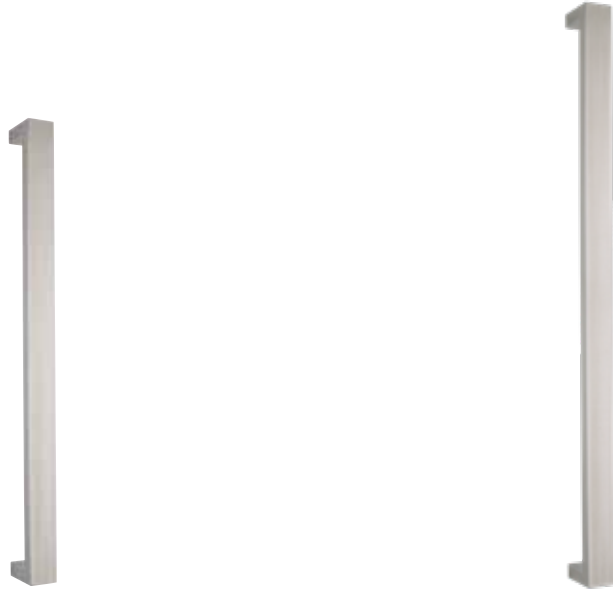


Make a statement every time you open your door with a Gainsborough Mortice Lock and Pull Handle.

Gainsborough's range of Pull Handles offer superior styling, and when selected with a Gainsborough Mortice Lock, combines to create unparalleled protection and security without compromising style. Coming home has never looked quite so good.



An impressive collection for a statement entry, the Gainsborough Pull Handles feature Commercial Grade Stainless Steel for non compromising durability.



COMMERCIAL GRADE OBLONG 600MM
 PICTURED FINISH Stainless Steel
 PART NUMBER 9266PH600 (1 per pack)
 AVAILABLE FINISHES MB. SS.

COMMERCIAL GRADE OBLONG 750MM
 PICTURED FINISH Stainless Steel
 PART NUMBER 9266PH750 (1 per pack)
 AVAILABLE FINISHES SS.



CURVED PULL HANDLE 600MM
 PICTURED FINISH Stainless Steel
 PART NUMBER 9282PH600 (1 per pack)
 AVAILABLE FINISHES SS.

HORIZON 600MM
 PICTURED FINISH Stainless Steel
 PART NUMBER 9248PH600 (1 per pack)
 AVAILABLE FINISHES SS.

HORIZON 750MM
 PICTURED FINISH Stainless Steel
 PART NUMBER 9248PH750 (1 per pack)
 AVAILABLE FINISHES SS.



OBLONG 600MM

PICTURED FINISH Matt Black
PART NUMBER OBL600PH (1 Set of
Back-to-Back handles)
AVAILABLE FINISHES MB, SS.



OBLONG 450MM

PICTURED FINISH Matt Black
PART NUMBER OBL450PH (1 Set of
Back-to-Back handles)
AVAILABLE FINISHES MB, SS.



Maintain a clean, minimalist look with Gainsborough's concealed Mortice Locks, combined with Gainsborough door furniture.



755 MORTICE LOCK DOUBLE CYLINDER

PICTURED FINISH Satin Chrome
PART NUMBER 755SC60



775 SERIES ROLLER BOLT MORTICE LOCK DOUBLE CYLINDER

AVAILABLE FINISH Satin Chrome
PART NUMBER 775SC60



760 SLIDING DOOR MORTICE LOCK DOUBLE CYLINDER

PICTURED FINISH Satin Chrome
PART NUMBER 760

Features a 57mm backset with a butterfly claw action deadbolt. Specify 768 for Single Cylinder version.

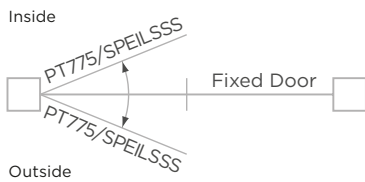


REBATE KIT TO SUIT 760 SERIES SLIDING DOOR MORTICE LOCK

PICTURED FINISH Satin Chrome
PART NUMBER 760RK



RIGHT-HAND DOOR

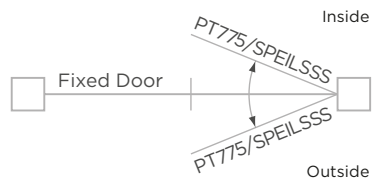


775 EXTENDED STRIKE PLATE

AVAILABLE FINISH Stainless Steel
 PART NUMBER PT775/SPEILS Left Hand
 PT775/SPEIRS Right Hand



LEFT-HAND DOOR



Featuring a 'ramp' in the cut-out area that receives the roller bolt to facilitate easier opening and closing of pivot doors. For use in conjunction with Mortice Locks on a pivot door.



777 REBATE KIT

AVAILABLE FINISH Satin Chrome
 PART NUMBER 777RK

Suits 775 Series Roller Bolt Mortice Lock.
 Non-handed to suit left or right-handed doors.



778 ROLLER BOLT MORTICE LOCK 60MM BACKSET SINGLE CYLINDER

AVAILABLE FINISH Satin Chrome
 PART NUMBER 778

The Gainsborough Security and Patio door range offers superior protection for complete peace of mind.

Quick and easy to install, the Gainsborough security range of products provide reliability, durability and security.



Product featured: SD7.

SECURITY *Doors*

AVAILABLE FINISHES ● BL ● BR ● PR

The Gainsborough Security Range is engineered to keep you safe and secure. The HD7 and Door Closers are specifically designed for hinged screen doors and are available in a variety of finishes.



HD7
 PICTURED FINISH Black
 PART NUMBER HD7

- Australian design and manufacture
- Interior snib locking feature
- Jemmy resistant deformable strike plate.



DOOR CLOSER
 PICTURED FINISH Black
 PART NUMBER DC

- Australian design and manufacture
- Adjustable closing speed
- Reliable and robust all metal construction
- Fitting tool included for easy installation
- Standard door closer for doors up to 18kgs.

For sliding security doors, the Gainsborough SD7 offers reliability, durability and strength to keep you safe and secure. Available in a variety of finishes.

SD7

PICTURED FINISH Black

PART NUMBER SD7

- Australian design and manufacture
- Self-latching lock bolt engages automatically when the door is closed
- Anti-lift pin on catch plate engages the lock body to prevent the sliding door being lifted out of its tracks
- Interior snib locking feature.



The Yarra Ridge, for sliding glass patio doors, is designed to meet both your style and security needs.

- Suitable for aluminium, timber and UPVC doors
- Australian design and manufacture
- Self-latching lock bolt engages automatically when the door is closed
- Anti-lift pin on catch plate engages the lock body to prevent the sliding door being lifted out of its tracks
- Interior snib locking feature
- Double and Single Cylinder option available.



YARRA RIDGE SINGLE CYLINDER

PICTURED FINISH Black

PART NUMBER YR4050

YARRA RIDGE DOUBLE CYLINDER

PICTURED FINISH Black

PART NUMBER YR4550

The Gainsborough range of traditional knobs is designed for general interior doors. For privacy locking on Gainsborough Classic Knobs, just add a 309 Privacy Adaptor to a passage set.



GAINSBOROUGH CLASSIC SERIES
DIPLOMAT PASSAGE KNOBSET
PICTURED FINISH Satin Chrome
PART NUMBER 305D



GAINSBOROUGH CLASSIC SERIES
DIPLOMAT DUMMY KNOBSET
PICTURED FINISH Bright Chrome
PART NUMBER 320D



GAINSBOROUGH CLASSIC SERIES
DIPLOMAT WARDROBE KNOB
PICTURED FINISH Satin Chrome
PART NUMBER 356D
AVAILABLE FINISHES BC, SC.



GAINSBOROUGH CLASSIC SERIES
WHITE PASSAGE KNOBSET
PICTURED BACKPLATE FINISH: Bright Chrome
PART NUMBER 1305WHI



GAINSBOROUGH CLASSIC SERIES
WHITE DUMMY KNOBSET
PICTURED BACKPLATE FINISH: Bright Chrome
PART NUMBER 1320WHI



GAINSBOROUGH CLASSIC SERIES
WHITE WARDROBE KNOBSET
PICTURED BACKPLATE FINISH: Bright Chrome
PART NUMBER 1356WHI



GAINSBOROUGH CLASSIC SERIES
WARM WHITE PASSAGE KNOBSET
PICTURED BACKPLATE FINISH: Bright Goldtone
PART NUMBER 1356WAW



GAINSBOROUGH CLASSIC SERIES
WARM WHITE WARDROBE KNOBSET
PICTURED BACKPLATE FINISH: Bright Goldtone
PART NUMBER 1305WAW



GAINSBOROUGH CLASSIC SERIES
309 ADAPTOR KIT
PICTURED FINISH Bright Goldtone
PART NUMBER 309



GAINSBOROUGH CIRCULAR SLIDING CAVITY SET PASSAGE

PICTURED FINISH Matt Black
PART NUMBER 396
AVAILABLE FINISHES ABC. BC. BSC. SC. MB.



GAINSBOROUGH CIRCULAR SLIDING CAVITY SET PRIVACY

PICTURED FINISH Brushed Satin Chrome
PART NUMBER 395
AVAILABLE FINISHES ABC. BC. BSC. SC. MB.



GAINSBOROUGH CIRCULAR SLIDING CAVITY SET CONNECTING

PICTURED FINISH Satin Chrome
PART NUMBER 397
AVAILABLE FINISHES BC. SC.



GAINSBOROUGH SQUARE SLIDING CAVITY SET PASSAGE

PICTURED FINISH Matt Black
PART NUMBER 386
AVAILABLE FINISHES BC. SC. MB.



GAINSBOROUGH SQUARE SLIDING CAVITY SET PRIVACY

PICTURED FINISH Bright Chrome
PART NUMBER 385
AVAILABLE FINISHES BC. SC. MB.



STRIKE PLATE TO SUIT 385, 395, OR 397

PICTURED FINISH Stainless Steel
PART NUMBER 395SP
AVAILABLE FINISHES BC. PB. SC.



GAINSBOROUGH RECTANGULAR SLIDING CAVITY SET PASSAGE

PICTURED FINISH Bright Chrome
PART NUMBER 394
AVAILABLE FINISHES BC. SC.



GAINSBOROUGH RECTANGULAR SLIDING CAVITY SET PRIVACY

PICTURED FINISH Bright Chrome
PART NUMBER 393
AVAILABLE FINISHES BC. SC. PB.



FACE PLATE AND PULL TAB ASSEMBLY

PICTURED FINISH Stainless Steel
PART NUMBER 396FP
AVAILABLE FINISHES BC. PB. SC.



RECTANGULAR FLUSH PULL 150

PICTURED FINISH Matt Black
PART NUMBER 730FP150
AVAILABLE FINISHES SB. MB. ABC. SS. SG.



RECTANGULAR FLUSH PULL 250

PICTURED FINISH Aged Brushed Copper
PART NUMBER 730FP250
AVAILABLE FINISHES SB. MB. ABC. SS. SG.



RECTANGULAR FLUSH PULL 350

PICTURED FINISH Satin Brass
PART NUMBER 730FP350
AVAILABLE FINISHES SB. MB. ABC. SS. SG.



RECTANGULAR FLUSH PULL

PICTURED FINISH Satin Chrome
PART NUMBER 392 (1 per pack)
AVAILABLE FINISHES ABC. BC. BG. BSC. SC.
MB. SB. SG.



RADIUS FLUSH PULL

PICTURED FINISH Bright Chrome
PART NUMBER 390 (1 per pack)
AVAILABLE FINISHES BC. BG. MB. SC.



RING FLUSH PULL

PICTURED FINISH Bright Chrome
PART NUMBER 6600 (1 per pack)
AVAILABLE FINISHES BC. SC.



**GAINSBOROUGH
DOOR SECURITY BOLT**

PICTURED FINISH Bright Chrome
PART NUMBER 444
AVAILABLE FINISHES BC, SC.

Star Key also available separately.
Part No. 444SBKVP



**GAINSBOROUGH
FLUSH BOLT 150MM**

PICTURED FINISH Bright Chrome
PART NUMBER 6051
AVAILABLE FINISHES BC, PB, SC.

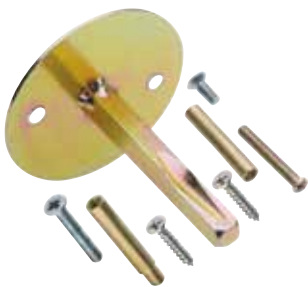
150mm x 19mm



**GAINSBOROUGH
FLUSH BOLT 200MM**

PICTURED FINISH Bright Chrome
PART NUMBER 6052
AVAILABLE FINISHES BC.

200mm x 19mm



**GAINSBOROUGH DUMMY
FIXING KIT WITH PLATE**

PART NUMBER KT700ADFP

KIT FOR THROUGH FIXING

Purchase two dummy fixing kits to convert
a Choice Lever set into two dummy levers.
Wood screws are also provided for an
alternative fixing option.



REBATE KIT

PICTURED FINISH Satin Chrome
PART NUMBER KT800REB
AVAILABLE FINISHES BC, PB, SC.

Suits 480, 800 Series.
Also available: KT 850REB (BC, PB, SC) for
850, 845, 550 & 545 Deadbolts and KT 890
REB (BC, PB, SC) for Trilocks.



LOCK INSTALLATION KIT

PART NUMBER PT800/IK

Includes 54mm hole saw,
mandrel and 25mm spade bit.



EXTENDED STRIKE - TRILOCK

PICTURED FINISH Satin Chrome
PART NUMBER PT890/SPE1
AVAILABLE FINISHES BC, SC.

To facilitate the installation of a Trilock on a
pivot door an Extended Strike Plate is available.



SPACER RINGS - SET OF 2

PICTURED FINISH Satin Chrome
PART NUMBER KT700SR
AVAILABLE FINISHES BC, SC.



RECTANGULAR FACE TUBULAR LATCH WITH D-STRIKE 60MM

PICTURED FINISH Satin Chrome
PART NUMBER 480
AVAILABLE FINISHES BC. SC. PB. MB.



RECTANGULAR FACE TUBULAR LATCH WITH T-STRIKE 60MM

PICTURED FINISH Satin Chrome
PART NUMBER 480T
AVAILABLE FINISHES BC. PB. SC.



RADIUS FACE TUBULAR LATCH WITH D-STRIKE 60MM

PICTURED FINISH Satin Chrome
PART NUMBER 488
AVAILABLE FINISHES BC. SC.



RECTANGULAR FACE TUBULAR LATCH WITH D-STRIKE 70MM

PICTURED FINISH Satin Chrome
PART NUMBER 481
AVAILABLE FINISHES BC. PB. SC.



GAINSBOROUGH DRIVE-IN COLLAR FACE TUBULAR LATCH 60MM BACKSET ROUND STRIKE

PICTURED FINISH Satin Chrome
PART NUMBER 482
AVAILABLE FINISHES BC. PB. SC.



WALL STOP

PICTURED FINISH Satin Graphite
PART NUMBER 6207
AVAILABLE FINISHES ABC. BC. SC. MB.

75mm length with rubber buffer, tube diameter 19mm.

Note: Rubber tips not sold separately.



WALL STOP

PICTURED FINISH Bright Chrome
PART NUMBER 6203
AVAILABLE FINISHES BC. SC. MB.

75mm length with rubber buffer.

Note: Rubber tips not sold separately.



FLOOR STOP

PICTURED FINISH Satin Brass
PART NUMBER 6205
AVAILABLE FINISHES BC. SC. SB. MB. SG.

45mm diameter base, 23mm height.

Note: Rubber tips not sold separately.

Accessories



3003ABC HYDRAULIC DOOR CLOSER

PICTURED FINISH Silver

PART NUMBER 3003ABC

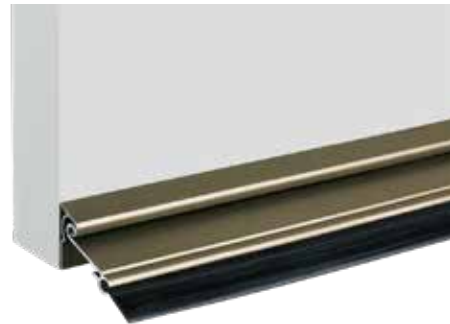
Accessories

DOOR SEALS & WEATHERSTRIPS



BRUSH

PART NUMBER GS2915



AUTOMATIC

PART NUMBER GS3915



STORM

PART NUMBER GS4915



RUBBER

PART NUMBER GS30WHV

Care and *maintenance*

General Care

Gainsborough suggests cleaning knobs, roses and plate every two months with a soft, damp cloth. A solution of soap and water could also be used to remove dirt from knobs, roses and other surfaces, but should not be used on cylinders. Ensure liquid does not enter cylinder at any time.

When cleaning, avoid using acidic or abrasive substances which may contain solvents, i.e. cleaning products, as such substances may cause a deterioration of the finish.

Cylinder

When key becomes “sticky” in cylinder, you may sprinkle a small amount of graphite onto the key and then insert the key inside cylinder. Do not use lubricant in cylinder (oil or aerosol type).

Locks

Gainsborough and Austral lock products are manufactured using a quality lubricant for smooth operation. If the product has been installed in a region subject to extreme climate or subject to a dusty environment, then such conditions may affect the original lubricant and therefore the product may require re-lubrication.

In this case, the working mechanism may be cleaned with a non-corrosive substance and then re-lubricated with a quality silicone or Teflon based lubricant. Do not use lubricant in cylinder (oil or aerosol type).

Caring for Stainless Steel

Depending on the environment where the product is used, blemishes can appear on stainless steel product. To help prevent this occurring, clean once a month. Blemishes on satin stainless steel may be removed by rubbing with a suitable stainless cleaner/polish such as Eagle One Original Never-Dull Wadding polish or Brite Shine Wadding Polish. Ensure rubbing occurs in the same direction as to the grain itself.

Caring for Solid Brass

Solid brass products are coated with a durable baked on clear protective lacquer which will significantly retard but will not permanently prevent tarnishing. Coated brass items should be wiped with a soft cloth and occasionally polished with a good non-abrasive wax (following manufacturer's directions.) NEVER USE ABRASIVE CLEANERS OR POLISHES ON A BRASS ITEM WITH A PROTECTIVE COATING. Solid Brass can be restored to its original appearance and resealed but it inhibits the product's warranty.

Remember, the nature of brass is to tarnish. The beauty of brass is that it can always be restored to its original finish. Breakdown of the lacquer coating, or natural tarnishing, to which brass is subject, in no way indicates a deterioration of the basic product.



Warranty

50 TRUSTED FOR
OVER FIFTY YEARS

Allegion warrants its products to be free from defects in material and workmanship for the stated periods from the date of purchase. Allegion will, at its option, repair or replace any products which in the opinion of Allegion are found to be defective, provided said products are returned to Allegion, freight prepaid. Allegion reserves the right to inspect the installation of defective products before any removal and return of any such products. This warranty excludes deterioration of decorative finishes, unless those finishes are specifically listed in the product warranty.



	MECHANICAL WARRANTY	TARNISH WARRANTY	ELECTRICAL WARRANTY
GAINSBOROUGH FREESTYLE TRILOCK			
FREESTYLE TRILOCK	10 Years	5 Years	2 Years
GAINSBOROUGH 3-IN-1 ENTRANCE SETS			
TRILOCK OMNI, TRILOCK OMNI ACCENT, TRILOCK ECLIPSE, TRILOCK URBAN, TRILOCK CONTEMPORARY, TRILOCK TRADITIONAL	10 Years	5 Years	N/A
GAINSBOROUGH STANDARD ENTRANCE SETS			
FIRST IMPRESSIONS	10 Years	5 Years	N/A
GAINSBOROUGH PULL HANDLES AND MORTICE LOCKS			
OBLONG	7 Years	2 Years	N/A
9200 SERIES	10 Years	5 Years	N/A
755 SERIES MORTICE	10 Years	5 Years	N/A
760 SERIES MORTICE	10 Years	5 Years	N/A
775 SERIES MORTICE	10 Years	5 Years	N/A
GAINSBOROUGH - DEADBOLTS			
NEUE SERIES	10 Years	5 Years	N/A
CHOICE SERIES	7 Years	2 Years	N/A
GAINSBOROUGH LEVERS			
AVANT SERIES (QUICKFIX)	15 Years	5 Years / 2 Years [^]	N/A
G3 QUICKFIX	10 Years	2 Years	N/A
FERRO SERIES	10 Years	5 Years	N/A
NEUE SERIES	10 Years	5 Years	N/A
CHOICE SERIES	7 Years	2 Years	N/A
GAINSBOROUGH KNOBS			
CLASSIC / DIPLOMAT (CLASSIC SERIES)	10 Years	10 Years	N/A
TERRACE (500 SERIES)	10 Years	5 Years	N/A
GOVERNOR (800 SERIES)	10 Years	5 Years	N/A
GAINSBOROUGH - ACCESSORIES			
FLUSH PULLS	N/A	10 Years / 2 Years [^]	N/A
SLIDING CAVITY DOOR SETS (CIRCULAR, SQUARE, RECTANGULAR)	N/A		N/A
TUBULAR LATCHES	10 Years	10 Years / 2 Years [^]	N/A
FLOOR STOPS, WALL STOPS	7 Years	2 Years	N/A
FLUSH BOLT	N/A	5 Years / 2 Years [^]	N/A
SECURITY BOLT	10 Years	5 Years / 2 Years [^]	N/A

[^]2 Years for Satin Brass & Satin Graphite.

glossary

Common Terms

Backset - the distance from the edge of the door to the centre of the hole for your lever or knob.

Cylinder - the cylindrical shaped mechanism housed within door locks that contains the tumbler and keyway, into which a key is inserted to operate the lock.

Deadbolt - a bolt engaged by turning a knob or key, rather than by spring action.

Door Preparation - the cut-outs or holes made to the door for the lock and/or lever being installed.

Dummy / Dummy trim - A face fixing lever or knob that matches your passage and privacy sets, for a cupboard or wardrobe door. Usually sold as singles not pairs and does not come with a latch. When supplying a dummy set for a right door you will need a left hand dummy set and vice versa for a left door.

Escutcheon - a cap that covers the base of a key cylinder (not to be confused with Rose as below).

Jamb - the frame that surrounds the door in the doorway.

Latch - the mechanism that slides into the edge of the door and retracts or protrudes with the turn of the doorknob or lever. The latch keeps the door closed and allows it to open.

Mortice Lock - a lock which is set within the body of a door in a recess or mortice, as opposed to one attached to the door surface.

Rose - a cap that covers the base of a door handle allowing concealed fixing screws.

Roller catch - has a spring-loaded roller held within a cylinder attached to a flange. The catch is recessed into the edge of the door while the striker plate is recessed into the jamb. Usually used with a dummy trim or pull handle.

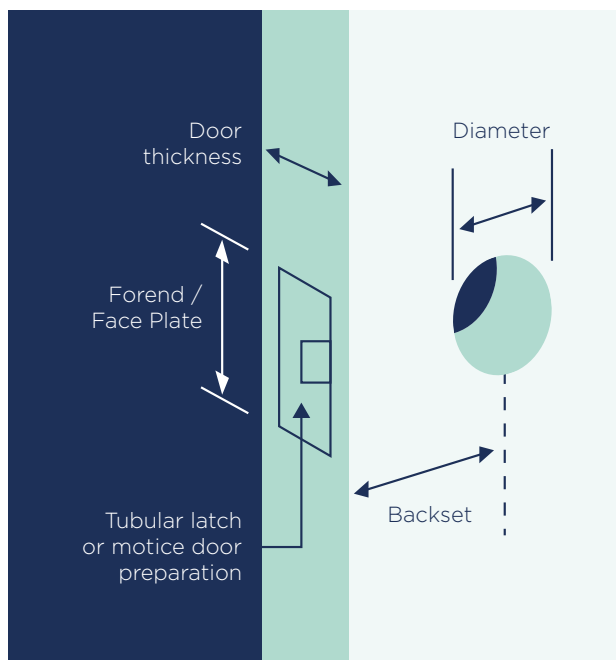
Stile - the vertical edge of the door where door furniture is fixed. A thin stile i.e. one with a glass pane near the edge of the door may have implications for which backset can be used.

Strike / Strike plate - the metal piece attached to the door jamb. As the door closes, the latch mechanism strikes the plate mounted to the jamb and the strike plate catches the mechanism and holds the door closed.

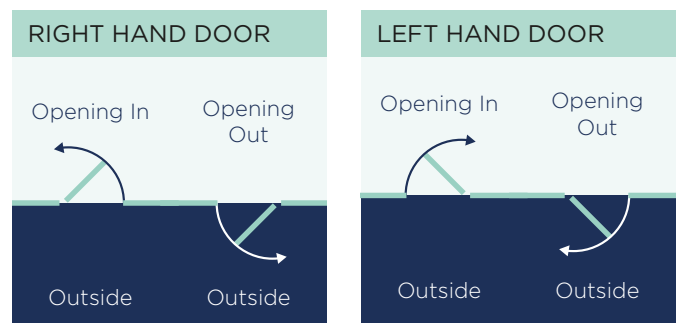
Turn - a small interior piece that can be turned with your finger and thumb to lock or unlock a door lock.

Installation *guides*

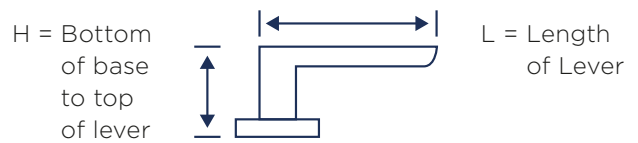
Door Preparation Guide



Hinge Handing Guide



Lever Dimension Guide



Gainsborough

ENTER WITH STYLE

Printed September 2021

gainsboroughhardware.com.au

Due to continuous product development, some products may vary from that shown. The Gainsborough limited guarantee, shown on the pages within, applies only when properly installed and subjected to no more than fair wear and tear. This guarantee does not extend to labour costs, personal loss, death or injury or economic, consequential or property damage of any kind whatsoever. Due to the nature of the printing process, colours may vary from those shown in this brochure.



BAYSWATER

144 Beechboro Rd South
Bayswater, Perth
+61 8 9473 5100

ALBANY

68 Cockburn Rd
Albany
+61 8 9844 5200

BUNBURY

50 McCombe Road
Bunbury
+61 8 9724 8900

BUSSELTON

9 Trumper Drive,
Busselton
+61 8 9752 7900

GERALDTON

315 Place Road
Geraldton
+61 8 9960 5000

MANDURAH

25 Hampton Street
Mandurah
+61 8 9583 8000

visit www.mbsales.com.au for more information