



ADVANCED COMPOSITE CLADDING

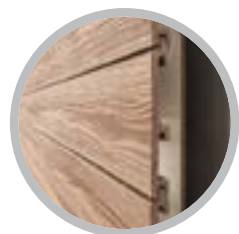
ADVANCED COMPOSITE CLADDING

The VistaClad lightweight composite cladding system is revolutionising how cladding works with an innovative clip strip which locks boards into place using reliable dual spring technology. VistaClad is available in a range of colours and finishes, with trim and accessories, as a complete cladding system, designed for ease of installation. Backed by an industry-leading warranty, this low-maintenance, weather-resistant cladding is a smart, cost-efficient investment in your project, and a sustainable investment in our planet.



VISTACLAD SYSTEM COMPONENTS

The VistaClad system combines Eva-Last composite technologies with an innovative installation process to provide a robust and convenient cladding solution. The resultant hidden fixing generates an unblemished finish and avoids the limitations or inconvenience of fastening through composite.



Composite Cladding Boards



Clip Strips



Adapters and Trim Profiles

CUTTING-EDGE SUSTAINABLE CLADDING

VistaClad composite cladding breathes vibrancy into your home or office space and enhances your walls with the attractive look of hardwoods. Let routine maintenance and premature replacement be things of the past as you look to the future with one of the most cutting-edge, and durable cladding products available. VistaClad is available in a selection of natural looking colours and comes with a complementary trim solution for a neat and tidy finish.

TAKE HOME THE BENEFITS



CLIP LOCK DESIGN

Boards securely click & lock into place to withstand strong winds



COMPLETE CLADDING SOLUTION

Innovative system with concealed fastening & trim for a finished look



LIGHTWEIGHT

Smart system engineered for lighter weight & better airflow



VENTILATED & INSULATED

Design allows for system ventilation & natural insulation



LOW-MAINTENANCE

Ideal for large-scale projects & application at height



DECAY RESISTANT

Resists biodegradation, corrosion, insects, UV, & harsh weather



COST-EFFECTIVE SYSTEM

Save on fast, simplified installation & overall upkeep



ECO-FRIENDLY

Sustainable manufacturing & use of raw materials

VISTACLAD CLADDING IN APEX PVC COMPOSITE

VistaClad is available in Apex PVC composite. Backed by a 30-year warranty, Apex lightweight, capped composite is an ideal cladding material. The dual colour finish of Apex provides an exceptionally natural looking composite which embodies the essence of timber in a range of nuanced shades to complement your overall project. Install this environmentally friendly, low-maintenance cladding vertically or horizontally to suit your style.

Apex

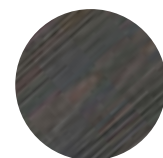


PVC COMPOSITE CLADDING MATERIAL




Capping material:
Engineered acrylic polymer

Core material:
Foamed-PVC composite



Sculpted Grain
Surface Finish

APEX FOAMED-PVC CLADDING PROFILE

Cross section	Product description	Dimensions	Coverage	Mass
	Two grooves	163 x 24.5 mm	6.6 m/m ²	1.6 kg/m



TECHNOLOGY:

Apex

VISTACLAD IN APEX DUAL TONE COLOUR TECHNOLOGY

The Apex dual tone colour range offers a sculpted grain finish for more natural looking cladding. Each cladding board has an extra layer of colour added to create the subtle variances found in timber. The sculpted grain finish produces a texture that embodies the look of wood to give your exterior walls the beauty of timber cladding in a more resilient, low-maintenance, and eco-friendly composite option.



Sculpted Grain
Surface Finish



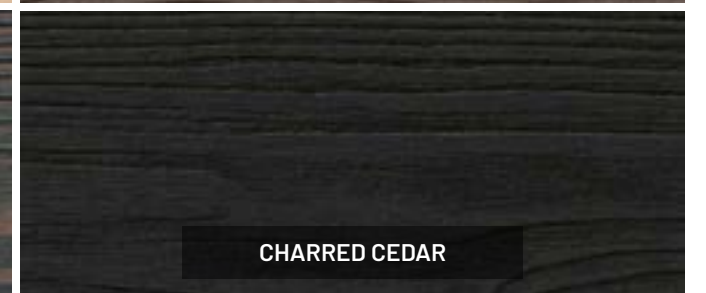
SWEDISH OAK



HAWAIIAN WALNUT



CARBONISED OSAGE



CHARRED CEDAR

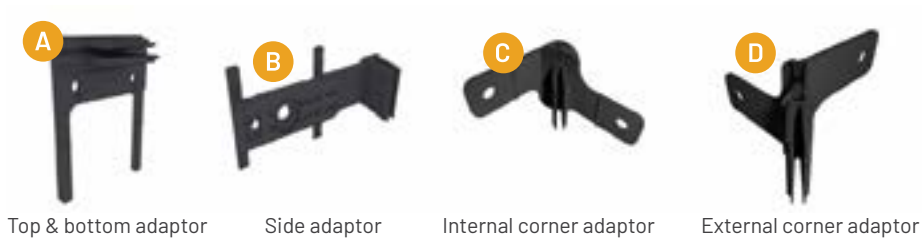


THE CLIP STRIP

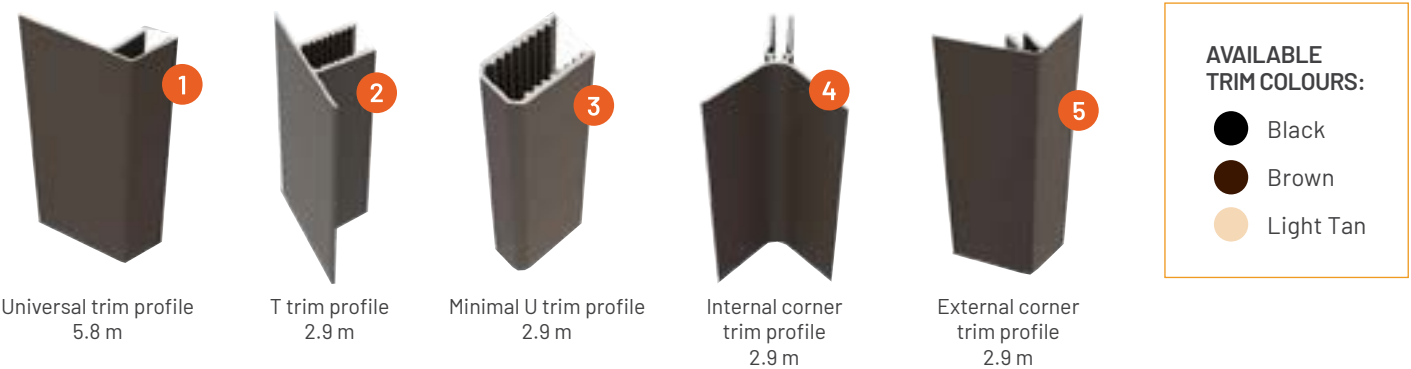
The VistaClad clip strip uses a punched spring design that allows the cladding boards to be easily and securely clicked into place. Three epoxy-coated, zinc-galvanised strip profile options provide flexibility in application and allow for optimal ventilation and drainage.

The dual spring-loaded clip creates a rigid hold and locks the boards in place.

NYLON ADAPTORS

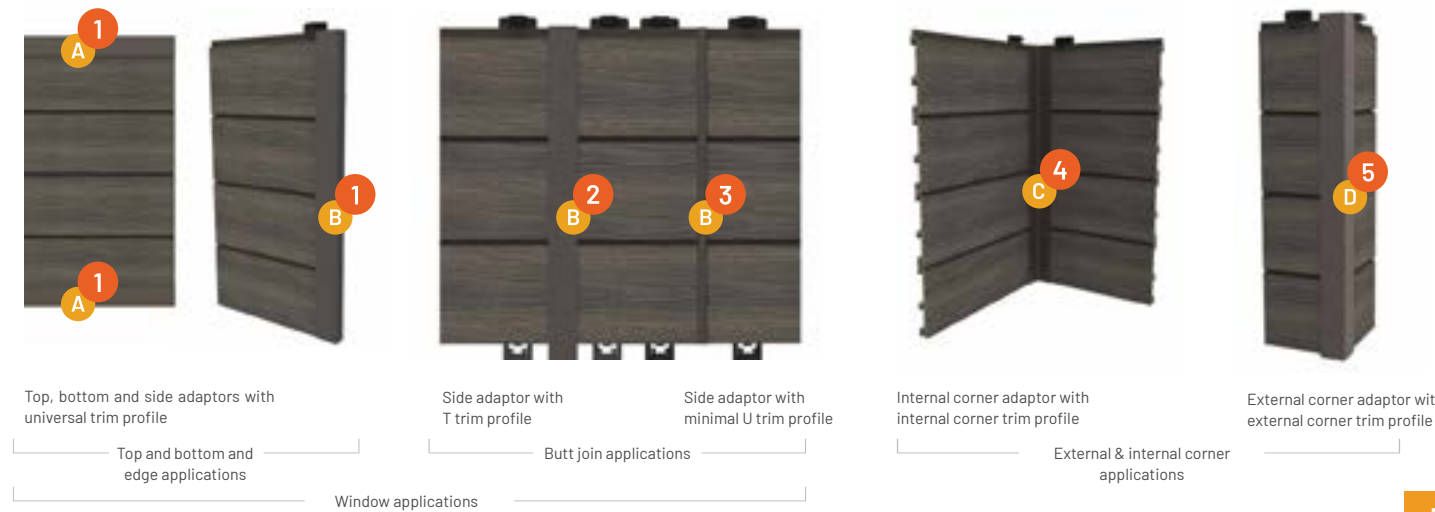


ALUMINIUM TRIM PROFILES



TRIM APPLICATIONS

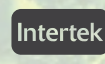
Trim accessories hide the structure for a neat final look and can be installed using sealing strips to improve the weather resistance of the cladding surface. The clip strip allows for easy guided placement of the adaptors and the universal trims may be used with VistaClad or any cladding boards with a thickness of 20.5 to 26.5 mm.





LOW ENVIRONMENTAL IMPACT

Holistically sustainable manufacturing & use of raw materials



CHOOSE SUSTAINABLE BUILDING MATERIALS



RENEWABLE RESOURCES & RENEWABLE ENERGY

We believe that how we manufacture is just as important as what we manufacture when it comes to going green. That's why we've traded in fossil fuels for renewable energy. Our products use solar power as part of our manufacturing process. We are fully committed to bringing you a product that's holistically sustainable.

Eva-Last is internationally recognised for our commitment to the environment. We're proud of the work we do to promote environmental sustainability, and invite you to choose timber alternatives that are gentle on the Earth.

- Made from recycled materials
- No trees felled
- No treatment or toxic chemicals required for maintenance
- Solar power used in the manufacturing process
- Reduced impact on landfills
- Reduced carbon footprint



BAYSWATER

144 Beechboro Rd South
Bayswater, Perth
+61 8 9473 5100

BUNBURY

50 McCombe Road
Bunbury
+61 8 9724 8900

GERALDTON

315 Place Road
Geraldton
+61 8 9960 5000

ALBANY

68 Cockburn Road
Albany
+61 8 9844 5200

BUSSELTON

9 Trumper Drive,
Busselton
+61 8 9752 7900

MANDURAH

25 Hampton Street
Mandurah
+61 8 9583 8000

EVA-LAST
INSPIRED BY NATURE, DESIGNED FOR LIFE.



www.eva-last.net.au

Eva-Last reserves the rights to all brands, products and trademarks within this publication.
Eva-Last ITEM: 0923 V3 WA VISTA CLAD BROCHURE

Disclaimer:

Although we make every effort to ensure the information contained in this brochure is accurate, we are NOT responsible for any errors or misprint that occurs and we are NOT responsible for ANY damage or liability that result from the use (or misuse) of the information. In the event that an error does occur, we reserve the right to correct, or make changes to, this information at any time.

Disclaimer:

Dimensional and mass data provided herein is indicative based on typical production and may vary with manufacture and material tolerance. Before installing any Eva-Last product, ensure that the application is rational and complies with the local regulations and building codes. Wherever necessary, consult a suitably qualified professional.